



520 Park East Blvd., New Albany, IN 47150 U.S.A
(812)-944-6733 / 1-800-SAMTEC9

Product Change Notification

1. ECR #: 25-38925-1
Notification #: 802

2. Date of Announcement: November 04, 2025

3. Series:

- ADF6 - ADF6 ASSEMBLY
- ADM6 - ADM6 ASSEMBLY

4. Part #'s Affected

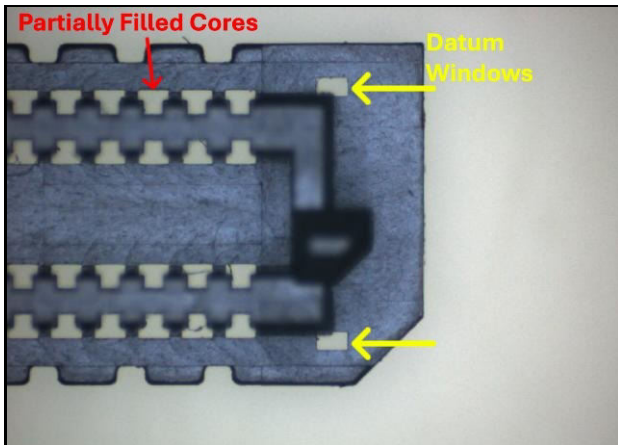
- ADF6-XXX-03.5-4-X-XX
- ADM6-XXX-01.5-4-X-XX

5. Description of Change:

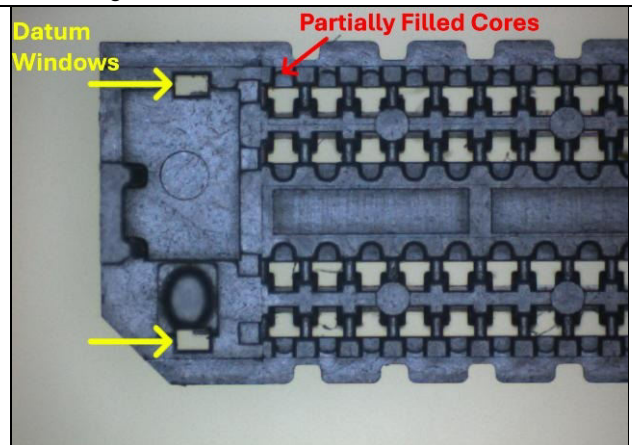
Form and fit changes to optimize the fine alignment features, tolerancing, and datum schemes to enhance the mated interface between ADM6 and ADF6 assemblies. Old revision material will no longer be used.

6. Method of Identifying Change

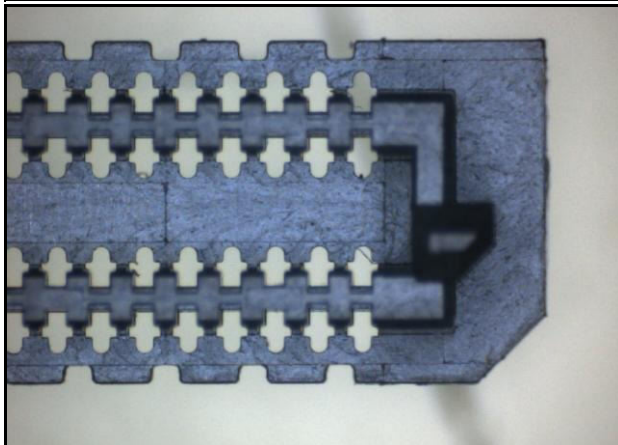
The new bodies will include datum windows on each corner of the alignment features.



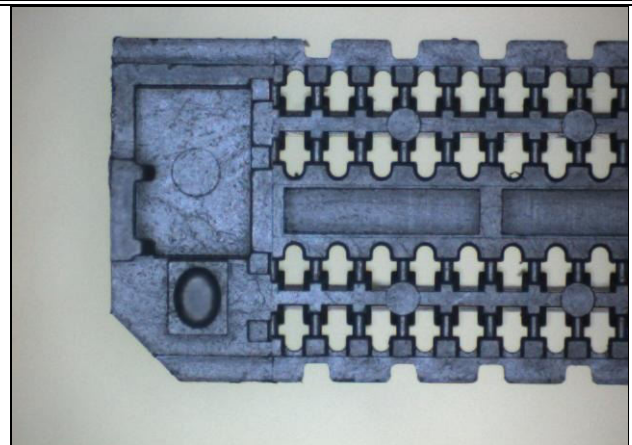
ADM6 -01.5 New Cores and Datum Windows (Top View)



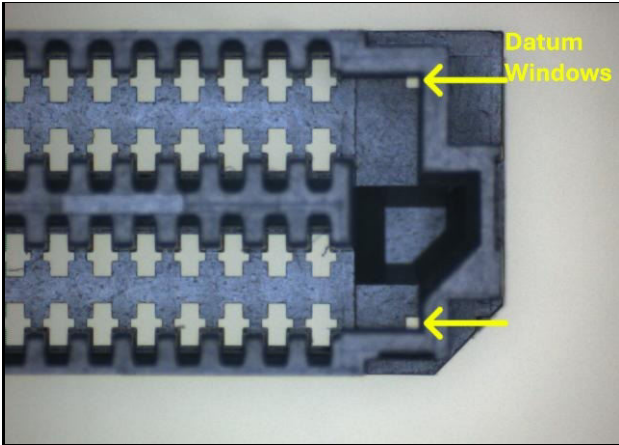
ADM6 -01.5 New Cores and Datum Windows (Bottom View)



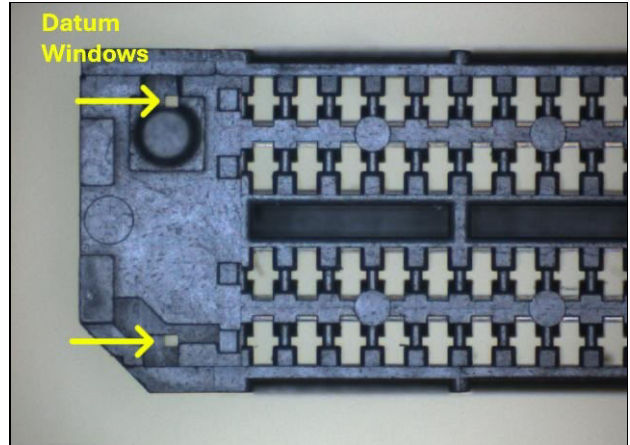
ADM6 Existing (Top View)



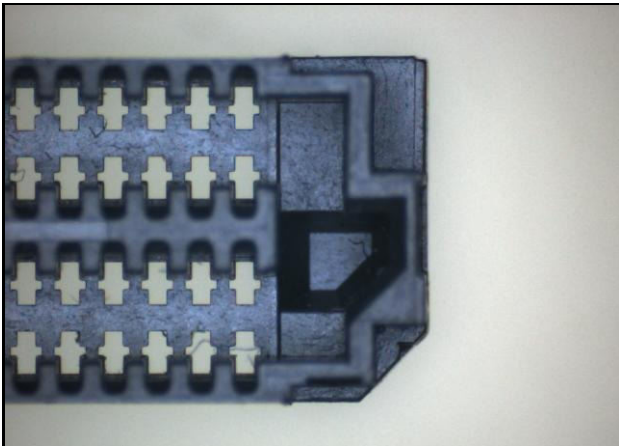
ADM6 Existing (Bottom View)



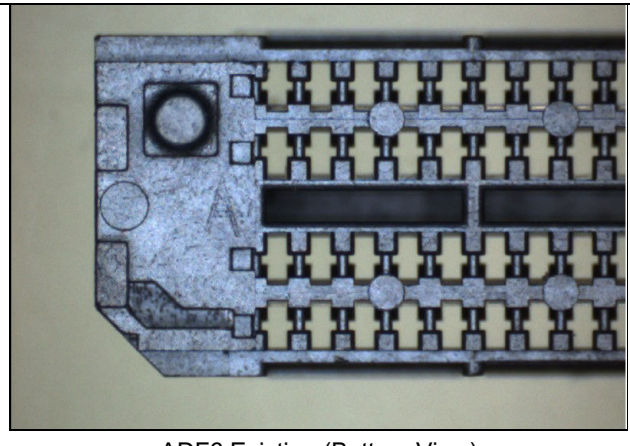
ADF6 -03.5 New Datum Windows (Top View)



ADF6 -03.5 New Datum Windows (Bottom View)



ADF6 Existing (Top View)



ADF6 Existing (Bottom View)

7. Reason for Change:

This product change is an improvement to hold the mating clearances to a tighter tolerance.

8. Impact of Change on Form, Fit, or Function:

- Form - Datum Windows added to both ADF6 and ADM6
- Fit - The Nominal for dimension "D" on the ADM6 Finished Good print will increase by +0.05mm for all positions
- Form - Partially Filled Cores on the Male -01.5 Body

9. Projected Implementation Date: February 02, 2026

Disclaimer

Please review the change notification details listed above for specific information regarding the nature and timing of the change. While Samtec has taken precautions to ensure this change is not detrimental to your application, each application can be unique and therefore customers should consider the effect of the change on their specific application.

Samtec has taken efforts to ensure that all users of this product who have requested change notifications have been informed. However, you should assume that this is the only notification that will be sent and you, as the recipient, must determine how to communicate this information to your organization(s) and customer(s) as appropriate. If you wish to opt out of receiving Samtec Product Change Notification emails, please contact CustomerECN@samtec.com. Due to technical progress, specifications are subject to change without notification and it is recommended to provide an alternative contact when opting out.

Please contact Samtec at CustomerECN@samtec.com for any questions related to this change.

To: TTI ASIA

Attention: PCN 423136

Notification #802

Notification Approval Date:11/04/2025

Request Id:25-38925-1

Samtec Part#(s)	Customer Part#(s)
ADM6-60-01.5-L-4-2-A-TR	SMTADM66001.5L42ATR
ADM6-60-01.5-L-4-2-A-TR	SMTADM66001.5L42ATR
ADM6-60-01.5-L-4-2-A-TR	SMTADM66001.5L42ATR
ADM6-60-01.5-L-4-2-A-TR	SMTADM66001.5L42ATR

Please review the change notification details listed above for specific information regarding the nature and timing of the change. While Samtec has taken precautions to ensure this change is not detrimental to your application, each application can be unique and therefore customers should consider the effect of the change on their specific application.

Samtec has taken efforts to ensure that all users of this product who have requested change notifications have been informed. However, you should assume that this is the only notification that will be sent and you, as the

recipient, must determine how to communicate this information to your organization(s) and customer(s) as appropriate. If you wish to opt out of receiving Samtec Product Change Notification emails, please contact CustomerECN@samtec.com. Due to technical progress, specifications are subject to change without notification and it is recommended to provide an alternative contact when opting out.

Please contact Samtec at CustomerECN@samtec.com for any questions related to this change.