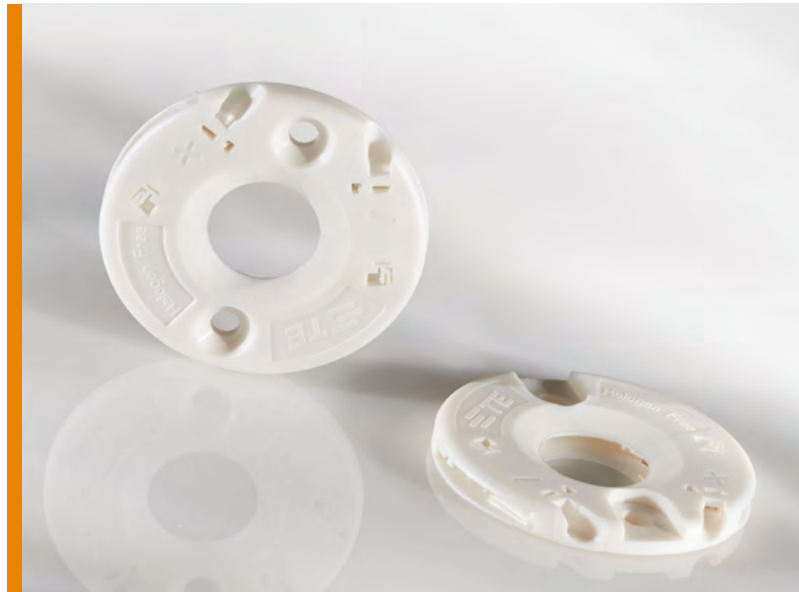


LUMAWISE LED HOLDER TYPE Z35

- Enable a higher level of integration through a solderless connection
- Achieve quick and easy LED assembly through tape-in LED retention



TE Connectivity (TE) introduces the LUMAWISE LED holder type Z35 suitable for LED boards from multiple LED manufacturers in sizes 13.5*13.5mm and 12*15mm. This new LED holder offers a higher level of integration via a solderless connection to chip-on-board (COB) LEDs using standard pan-head and countersunk screws. TE's type Z35 LED holder enables quick and easy LED assembly through tape-in LED retention and provides easy attachment of secondary optics.

BENEFITS

- Enable a higher level of integration through a solderless connection
- Achieve quick and easy LED assembly through tape-in LED retention
- Ease termination with integrated poke-in wire termination
- Help protect the LED chip against halogen outgassing through high-reflectivity, halogen free polymeric housing materials

MECHANICAL

- -20 to 90° C operating temperature
- Diameter: 35mm
- Applicable wire: 20 - 22AWG solid and stranded wire
- Mating cycles: 5 times on LED
- For use with M2 screw
- Strip length of the wires needs to be 7 mm

STANDARDS & SPECIFICATIONS

- Product Specification: 108-133006
- Application Specification: 114-32045

APPLICATIONS

- Spot lights
- Track lights
- Recessed downlights
- Wall sconces
- Street lights
- Runway lights
- Architectural lighting

ELECTRICAL

- Current rating: TBD (2A target) max.
- Voltage rating: 43VDC max.
- Dielectric withstand voltage: 500VDC
- UL approbation pending

MATERIALS

- Terminals: LED contact interface is silver plated
- Housing: UL94VO rated

LEARN MORE

[LUMAWISE Brochure](#)
[LUMAWISE LED Holder Z35 Parts List](#)
[Product Selection](#)
[LUMAWISE Landing Page](#)