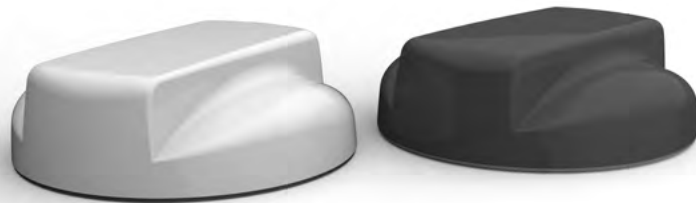


LIGHT TRANSIT LOW-PROFILE MIMO ANTENNA RANGE

- Support the latest generation of vehicular routers with up to date specifications
- Enable a simple and easy installation with no need of metallic substrate



TE Connectivity (TE) introduces the light transit, low-profile MiMo antenna range, designed to support the new generation of vehicular LTE routers. The antenna enclosure contains three isolated high performance antenna elements: two ultra-wideband elements covering 698-2700MHz supporting MiMo/diversity at cellular/LTE frequencies and a high performance GPS antenna with an integrated 26dB gain Low Noise Amplifier (LNA) with a high quality filter to combat noise. The antenna maintains a high level of performance even when mounted on non-metallic surfaces.

BENEFITS

- Limit accidental damage with a high-quality, rugged, low-profile, environmentally friendly design
- Support the latest generation of vehicular routers with up to date specifications
- Enable a simple and easy installation with no need of metallic substrate
- Provide a solution to multiple applications with various versions

MECHANICAL

- Dimensions, Height: 62mm (2.4")
- Dimensions, Diameter: 176mm (6,7")
- Operating Temperature: -30°C / +80°C (-22°F / +176°F)
- Material: A.S.A. & die cast aluminum
- Ingress Protection: IP66
- Color: White

APPLICATIONS

- Light transit Passenger Vehicles
- Agricultural Vehicles
- Trucks

STANDARDS & SPECIFICATIONS

- LTE, WIFI/WIMAX, GPS/GNSS

ELECTRICAL

- Frequency range (MHz) Elements 1&2: 698-960 / 1700-2700
- Operational Bands Elements 1&2: LTE / Cellular
- Peak Gain Isotropic Elements 1&2 (698-960): 2.3 dBi
- Peak Gain Isotropic Elements 1&2 (1710-2700): 5 dBi
- Polarization: Vertical
- VSWR Elements 1&2: <2.5:1
- Isolation(in free space) Elements 1&2: >15dB
- Impedance: 50Ω
- Max Input Power: 50W

LEARN MORE

[Light Transit Antenna Flyer](#)

[Light Transit Antenna Landing Page](#)

[Light Transit Low-Profile MiMo Antenna Range Parts List](#)