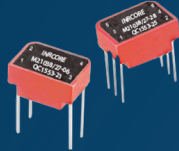
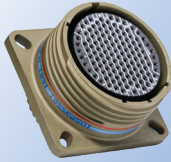
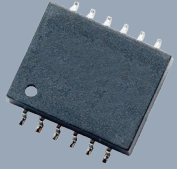




The IP&E
Specialist

Aerospace & Defense

Asia Line Card



Mil-Std and Hi-Rel
In Stock and
Available to Sell



Reach your local
TTI Specialist at
+65 6510 1846

ttiasia.com



The challenges and demands of today's rapidly changing global market require more efficient and productive operations to remain competitive.

TTI embraces these challenges, consistently delivering a wide variety of solutions for our military and aerospace customers. This line card is representative of TTI manufacturers with military specified MIL-Spec components.

Visit www.ttiasia.com for a broader listing of authorized TTI suppliers for COTS and/or commercial applications.

3M **AirBorn** **Amphenol** **• A P T I V •**

BOURNS **Littelfuse** **C&K** **cannon** **CHEMI-CON**

DELEVAN **EATON** **Glenair** **GWANDA**

HellermannTyton **Honeywell** **KEMET** **knowles** **CDÉ**

KYOCERA **Littelfuse** **molex** **OHMITE**

precip-dip **ROHM** **samtec** **Sensata Technologies**

SPECTRUM CONTROL **TE** **VISHAY** **VISHAY FOIL RESISTORS**

GROUNDING IN MILITARY SUPPORT

TTI was founded in 1971 specifically to serve military customers with MIL-Spec passive components. Today, TTI maintains that dedication with the industry's broadest and deepest inventory of military passives, as well as continually expanding lines of electromechanical components and discrete offerings to ultimately reduce your total cost of ownership. The product specialists at TTI have extensive knowledge of MIL-Specs and their relationship with commercial parts. The ability of the TTI Specialists to cross-reference part numbers, make cost-effective recommendations and identify product upgrades, can help answer your most difficult questions and satisfy your toughest requirements.

BEYOND PREMIER PRODUCTS

TTI experts have developed applications, programs and systems to seamlessly manage inventory and logistics through fully customizable supply chain solutions. This system leverages the industry's broadest and deepest inventory of military passives and connectors.

TTI employs a team of highly trained and experienced material management experts. A regional supply chain solutions manager will assess the current state of your manufacturing process and provide recommendations on the appropriate supply chain solution, to minimize total acquisition and inventory management costs. Once a supply chain program is developed, its management team ensures the program is running properly and optimized to speed your time to market.



Suppliers by Component

CONNECTORS

AirBorn
Amphenol
Aptiv (formally Delphi)
Eaton Souriau
Glenair
ITT Cannon
Molex
Preci-Dip
Samtec
TE Connectivity
Vishay/Dale

CAPACITORS

Chemi-Con
Cornell Dubilier
KEMET (YAGEO)
KYOCERA AVX
Spectrum Control
Vishay

CIRCUIT PROTECTION

EATON
Littelfuse

DISCRETE SEMICONDUCTORS

Bourns
EATON
Littelfuse
ROHM Semiconductor
TT Electronics/Semelab
Vishay

RESISTORS

Bourns
Honeywell
OHMITE
TT Electronics/IRC
Vishay
Vishay Precision Group

FILTERS

KYOCERA AVX
Gowanda
Spectrum Control

INDUCTORS

Delevan
Gowanda

RELAYS

Amphenol
TE Connectivity

SENSORS

Honeywell

SWITCHES

C&K
Honeywell

WIRE AND CABLE MANAGEMENT

3M
Glenair
HellermannTyton
TE Connectivity

VALUE-ADDED SERVICES

All Services are Manufacturer Authorized

TTI recognizes the expanding needs of the military market and has extended the number and scope of services offered to meet the needs of our military customers:

- Bar Code Labeling (2D part labeling)
- Calibration Systems, ANSI/NCSL Z540-1-1994
- Category B Marking
- Connector Assembly, Category C
- Dedicated Military Programs, MIL-STD-790
- Documentation and Traceability, MIL-STD-790
- ESD Packaging, Including Special Requirements
- ESD Program, Compatible with MIL-STD-1686
- Hot Solder Dipping, Component Lead Preparation IPC/EIA J-STD-002
- International Shipping and Documentation
- Military Inspection Standards, ANSI-Z1.4 and MIL-STD-1686
- MIL Packaging, MIL-STD-1686, MIL-STD-2073-1, MIL-STD-794
- Solderability Testing, MIL-STD-202/208, IPC/EIA J-STD-002
- Special Certifications
- Special Date Codes
- Tape and Reel, EIA-296, EIA-468, EIA-481



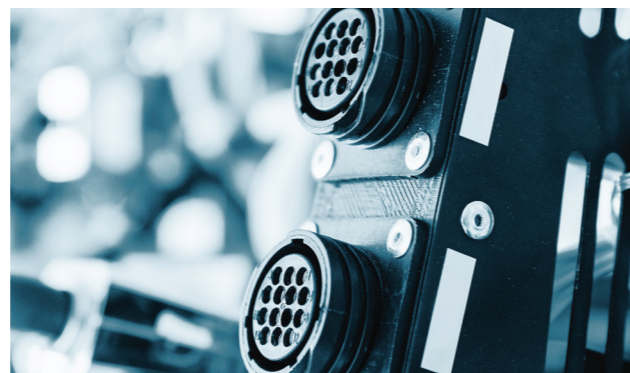
Committed to Quality ISO 9001 and AS9100C Registered

TTI is proud of its heritage in the defense industry and our commitment to the warfighter is reflected in our quality systems. TTI is registered to ISO 9001 globally and AS/EN9100 in North America and Europe. TTI's total quality processes assure you the utmost in accuracy with product and delivery around the globe, tailored to your exact requirements.

CIRCULAR CONNECTORS	Amphenol	Amphenol Fiber	Amphenol Matrix	Amphenol PCD	Aptiv (Delphi)	Eaton Souriau	Glenair	ITT Cannon	TE Connectivity
EN2997									
EN2997XX0	◆				◆	◆	◆		◆
EN2997Y1/EN2997YE1	◆				◆	◆	◆		◆
EN2997XX6	◆				◆	◆	◆		◆
EN2997XX7	◆				◆	◆	◆		◆
EN3645									
EN3645?0	◆				◆				◆
EN3645?6	◆				◆				◆
EN3645?7	◆				◆				◆
Filtered Audio Connector									
MIL-DTL-55116		◆							
MIL-DTL-38999 Series I & II									
MS27466	◆				◆				◆
MS27467	◆				◆				◆
MS27468	◆				◆				◆
MS27469	◆					◆			◆
MS27470	◆				◆				◆
MS27471	◆				◆				◆
MS27472	◆				◆				◆
MS27473	◆				◆				◆
MS27474	◆				◆				◆
MS27475	◆					◆			◆
MS27476	◆				◆				◆
MS27477	◆				◆				◆
MS27478	◆				◆				◆
MS27479	◆				◆				◆
MS27484	◆				◆				◆
MS27496	◆								◆
MS27497	◆				◆				◆
MS27499	◆				◆				◆
MS27501	◆				◆				◆
MS27502	◆				◆				◆
MS27505	◆				◆				◆
MS27508	◆				◆				◆
MS27510	◆				◆				◆
MS27511	◆				◆				◆
MS27512	◆				◆				◆
MS27513	◆				◆				◆
MS27656	◆				◆				◆
MIL-DTL-38999 Series III Aluminum									
M38999/9				◆	◆				
M38999/10				◆	◆				
D38999/20 F/G/W/Z/T	◆				◆	◆	◆		◆
D38999/24 F/G/W/Z/T	◆				◆	◆	◆		◆
D38999/26 F/G/W/Z/T	◆				◆	◆	◆		◆
D38999/28	◆				◆	◆	◆		◆
D38999/32	◆				◆	◆	◆		◆
D38999/33	◆				◆	◆	◆		◆
MIL-DTL-38999 Series III Composite									
D38999/20 J/M	◆				◆				◆
D38999/24 J/M	◆				◆				◆
D38999/26 J/M	◆				◆	◆	◆		◆
MIL-DTL-38999 Series III Firewall									
D38999/20 K/S	◆				◆				◆
D38999/24 K/S	◆				◆				◆
D38999/26 K/S	◆				◆				◆
MIL-DTL-38999 Series III Lanyard									
D38999/29	◆								◆
D38999/30	◆								◆
D38999/31					◆				◆

CIRCULAR CONNECTORS	Amphenol	Amphenol Fiber	Amphenol Matrix	Amphenol PCD	Aptiv (Delphi)	Eaton Souriau	Glenair	ITT Cannon	TE Connectivity
MIL-DTL-38999 Series IV									
D38999/41 H/N/Y							◆		
D38999/43 H/N/Y							◆		◆
D38999/43 G/N									◆
D38999/45 H/N/Y							◆		◆
D38999/48 H/N/Y							◆		
BACC Standards									
BACC63CD		◆							
BACC63CE		◆							
BACC63CM		◆							◆
BACC63CN		◆							◆
BACC63CT		◆				◆	◆		
BACC63CU		◆				◆	◆		
BACC63DB		◆				◆	◆		
BACC63DC		◆				◆	◆		
BACC63DE			◆						
BACC63DF			◆						
BACC63DG			◆						
BACC63DH			◆						
BACC63DN		◆							
BACC63DP					◆				
BACC63ED			◆						
BACC63EE			◆						
BACC63EF			◆						
BACC63EK		◆							
BACC63EL		◆							
BACC65BP			◆						
BACC65BR			◆						
BACC65BU									◆
BACC65BV									◆
BACC65CA									◆
BACC65CP									◆
BACC66?						◆	◆		◆
BAC110BC									◆
BAC110BI				◆					◆

CIRCULAR CONNECTORS	Amphenol Nexus	Amphenol Matrix
Filtered Audio Connector		
MIL-DTL-55116	◆	◆



RECTANGULAR CONNECTORS	AirBorn	Amphenol	Amphenol Nexus	Amphenol PCD	Amphenol Positronic	Aptiv (Delphi)	Eaton Souriau	Glenair	ITT Cannon	TE Connectivity	Vishay/Dale
MIL-DTL-24308 & Space Grade											
M24308/1 & M24308/3				◆	◆		◆			◆	
M24308/2 & M24308/4				◆	◆					◆	◆
M24308/5				◆	◆						
M24308/6 & M24308/8				◆	◆						◆
M24308/7				◆	◆						
M24308/9				◆	◆				◆		
M24308/23 & M24308/24				◆	◆				◆	◆	
M24308/25 & M24308/26				◆	◆				◆	◆	
311P407					◆				◆	◆	
311P409							◆		◆	◆	
MIL-DTL-12883											
M12883/40 thru M12883/55				◆							
MIL-DTL-21097											
M21097/11										◆	
M21097/13										◆	
M21097/14										◆	
M21097/15										◆	
M21097/16										◆	
MIL-DTL-28748											
M28748/7											◆
M28748/8											◆
M28748/9						◆					
M28748/10						◆					
MIL-DTL-28804											
M28804/1 thru M28804/11						◆					
MIL-DTL-32139											
M32139/01		◆								◆	
M32139/02		◆								◆	
M32139/03		◆								◆	
M32139/04		◆								◆	
AS81659 & ARINC											
M81659										◆	
ARINC 404		◆								◆	◆
ARINC 600		◆					◆			◆	◆
AS81714											
M81714/1 thru M81714/12				◆							
M81714/4 & M81714/11				◆							◆
M81714/16 & M81714/17				◆							◆
M81714/21 & M81714/23				◆							◆
M81714/60 & M81714/67				◆							◆
M81714/69											◆
MIL-DTL-83513											
M83513/XX											
MIL-DTL-83733											
M83733											
EN4165											
EN4165			◆								◆

MIL-DTL-55302	AirBorn	Amphenol	TE Connectivity	MIL-DTL-55302	AirBorn	Amphenol	TE Connectivity
M55302/21				M55302/121	◆		◆
M55302/22				M55302/122			◆
M55302/23			◆	M55302/123			◆
M55302/24			◆	M55302/124			◆
M55302/25			◆	M55302/125			◆
M55302/26			◆	M55302/126			◆
M55302/27			◆	M55302/127			◆
M55302/31	◆		◆	M55302/128			◆
M55302/55	◆			M55302/129			◆
M55302/56	◆			M55302/130			◆
M55302/57	◆			M55302/138		◆	◆
M55302/58	◆			M55302/139	◆		◆
M55302/59	◆			M55302/156			◆
M55302/60	◆			M55302/166		◆	◆
M55302/61	◆			M55302/167		◆	◆
M55302/62	◆			M55302/168		◆	◆
M55302/63	◆			M55302/169		◆	◆
M55302/64	◆			M55302/170		◆	◆
M55302/65	◆			M55302/171		◆	◆
M55302/66	◆			M55302/172		◆	◆
M55302/67		◆		M55302/173			◆
M55302/68		◆		M55302/174			◆
M55302/69		◆		M55302/175			◆
M55302/70		◆		M55302/176			◆
M55302/71		◆		M55302/177			◆
M55302/76		◆		M55302/178			◆
M55302/77		◆		M55302/179			◆

	Amphenol	Amphenol Fiber	Amphenol PCD	Amphenol RF	Amphenol SV	Aptiv (Delphi)	Eaton Souriau	Glenair	HellermannTyton	ITT Cannon	Molex	Preci-Dip	TE Connectivity
Backshells & Accessories													
M28840						◆		◆					
M85049	◆		◆				◆	◆	◆	◆			◆
MS25042	◆		◆					◆					
MS25043	◆		◆					◆					
MS27291	◆							◆					
MS27501	◆							◆					
MS27502	◆						◆	◆					
MS27510	◆							◆					
MS27511	◆							◆					
MS27512	◆							◆					
MS27558	◆							◆					
MS27559	◆							◆					
MS27657	◆							◆					
MS3057	◆							◆					
MS3180	◆		◆					◆					
MS3181	◆		◆					◆					
MS3186	◆		◆					◆					
MS3420	◆							◆					
D38999/32	◆						◆	◆					
D38999/33	◆						◆	◆					
MS3115	◆						◆	◆					
Coax/RF													
MIL-PRF-39012				◆	◆								◆
MIL-DTL-39030						◆							
MIL-DTL-83517/1-9				◆									◆
MIL-DTL-83517/10													◆
MIL-PRF-55339				◆	◆								◆

WIRE, CABLE & HEAT SHRINK PRODUCTS		3M Interconnect	Glenair	HellermannTyton	TE Connectivity
MIL-S-81824/1	Mini Seal Splices				◆
AMS-DTL-23053	Heat-shrinkable tubing	◆			◆
AR70-75	Heat-shrinkable tubing				◆
MIL-DTL-24640	Wire				◆
MIL-C-24643	Heat-shrinkable tubing				◆
MIL-C-85485	ElectroLoss FilterLine Wire & Cable				◆
MIL-PRF-46846	Heat-shrinkable tubing				◆
MIL-W-81044	SPEC 44 Wire				◆
A-A-56031 (S/S MIL-A-46864)	Adhesive, epoxy, flexible				◆
M83723/16, /27	Boots – heat shrink, strain relief, straight & right angle				◆
SAE AS31091	Boots – straight			◆	◆
SAE AS31171	Boots – heat shrink, strain relief & right angle			◆	◆
SAE AS81765	Insulating components				◆
SAE AS22759	SPEC 44 & SPEC 55 Wire				◆
AS85049	Shrink Boots			◆	
AS50151, M26482 Series II, M83723 Series III, AS81703 Series 3, AS95234	Shrink Boot Adaptors			◆	
AS83519	Heat Shrink Termination Sleeves			◆	

FIBER OPTIC		Aptiv (Delphi)	HellermannTyton
M28876	MIL-C-28876	◆	◆
M83526	MIL-PRF-83526	◆	◆

	Amphenol	Amphenol Fiber	Aptiv (Delphi)	Eaton Souriau	Glenair	Molex	Preci-Dip	TE Connectivity
Contacts								
MIL-PRF-29504	◆	◆	◆		◆			
AS39029	◆				◆		◆	◆
BACC47	◆				◆			◆
EN3155	◆				◆			◆
Sealing Plugs								
MS27488				◆				◆
Terminals								
M7928/1								◆
M7928/4								◆
M7928/5						◆		◆
M7928/6								◆
M7928/7								◆
MIL-S-81824/1								◆
MS17143						◆		◆
MS20659						◆		◆
MS25036						◆		◆
MS25274								◆
NAS 1747								◆
SAE AS83519/1								◆
SAE AS83519/2								◆
Tools								
AS22520								◆
AS81969	◆							◆

WIRE MANAGEMENT		HellermannTyton
MS3367-1 ~ -7	Cable ties	◆
MS3367-23 ~ -27	Cable ties	◆
MS3367-29	Cable ties	◆
MS3368-1-A, -B	Marker ties	◆
MS3368-2-A, -B	Marker ties	◆
MS3368-3-C	Marker ties	◆
MS3368-4-D	Marker ties	◆
MS3368-5-E	Marker ties	◆
MS90387-1 ~ -3	Installation tools	◆
MS21266	Grommet edging	

IDENTIFICATION/LABEL		HellermannTyton
MIL-STD-202G method 215K, MIL-I-23053/5	SHRINKTRAK Heat Shrink Wire Markers	◆
SAE-AS81531 and Mil-Std 202G, Method 215K	TIP TAG Series	◆
	Polyester for UID Labeling	◆
	Vinyl Self Laminating	◆

ALUMINUM & MICA		Cornell Dubilier	Chemi-Con
Aluminum • MIL-PRF-39018			
M39018/01	CU12		
M39018/01	CU13		
M39018/01	CUR13		
M39018/02	CU14		
M39018/02	CU15		
M39018/03	CU16		
M39018/03	CU17		
M39018/03	CUR17		
M39018/04	CU71, CUR71	◆	
M39018/06	CUR91	◆	
M39018/07	CUR19		
M39018/10	CUR92	◆	
Aluminum • DSCC Drawings			
01001	MIL-PRF-39018		◆
05018	MLP	◆	
05019	MLS	◆	
88022	MIL-PRF-39018		
89012	MIL-PRF-39018		◆
89021	MIL-PRF-39018		
Mica • MIL-PRF-39001			
39001/5	CMR03		◆
39001/5	CMR04		◆
39001/5	CMR05		◆
39001/5	CMR06		◆
39001/5	CMR07		◆
39001/5	CMR08		◆
Aluminum • Specialized			
MLSG FlatPack		◆	
MLSH - Hermetic SlimPack		◆	
AXLH - Axial High-temp		◆	
HHT - Rugged High-temp		◆	

CERAMIC & DISC		KEMET	KYOCERA AVX	Spectrum Control	Vishay
Ceramic • MIL-C-11015					
	CK05	◆	◆		
	CK06	◆	◆		
	CK12	◆	◆		
	CK13	◆	◆		
	CK14	◆	◆		
	CK15	◆	◆		
	CK16	◆	◆		
	CK22		◆		
	CK27				
Disc Capacitors • MIL-C-11015					
	CK60				
	CK61				
	CK62				
	CK63				
	CK64				
	CK65				
	CK66				
	CK67				
	CK70				
	CK72				
	CK74				
	CK75				
	CK78				
	CK79				
	CK99			◆	

CERAMIC & DISC		KEMET	KYOCERA AVX	Spectrum Control	Vishay
Ceramic • MIL-PRF-123					
M123	CKS05-06	◆	◆		
M123	CKS05-07	◆			
M123	CKS11-24		◆		
M123	CKS51-57	◆	◆		◆
Ceramic • MIL-PRF-32535					
M3253502	0402	◆	◆		
M3253503	0603	◆	◆		
M3253504	0805	◆	◆		
M3253505	1206	◆	◆		
M3253506	1210	◆	◆		
M3253507	1812	◆	◆		
M3253508	2220	◆	◆		
Ceramic • GR900					
GR900	C052, C062, C512	◆			
Ceramic • MIL-PRF-20					
CCR05	CC05	◆	◆		
CCR06	CC06	◆	◆		
CCR07	CC07	◆	◆		
CCR08	CC08	◆	◆		
CCR09	CC09		◆		
CCR75	CC75	◆	◆		
CCR76	CC76	◆	◆		
CCR77	CC77	◆	◆		
CCR78	CC78	◆	◆		
CCR79	CC79	◆	◆		
Ceramic • MIL-PRF-39014					
M39014/01	CKR05	◆	◆		
M39014/02	CKR06	◆	◆		
M39014/05	CKR11	◆	◆		
M39014/05	CKR12	◆	◆		
M39014/05	CKR14	◆	◆		
M39014/05	CKR15	◆	◆		

CERAMIC & DISC		KEMET	KYOCERA AVX	Spectrum Control	Vishay
Ceramic • MIL-PRF-39014 cont.					
M39014/05	CKR16	◆	◆		
M39014/20	CKR08		◆		
M39014/22	CKR22		◆		
M39014/22	CKR23		◆		
M39014/22	CKR24		◆		
M39014/23	CKR04		◆		
Ceramic • MIL-PRF-55681					
M55681/01	CDR01	◆	◆		◆
M55681/01	CDR02	◆	◆		◆
M55681/01	CDR03	◆	◆		◆
M55681/01	CDR04	◆	◆		◆
M55681/02	CDR05	◆	◆		
M55681/03	CDR06	◆	◆		◆
M55681/04	CDR11		◆		
M55681/04	CDR12		◆		
M55681/04	CDR13		◆		
M55681/04	CDR14		◆		
M55681/07	CDR31	◆	◆		◆
M55681/08	CDR32	◆	◆		◆
M55681/09	CDR33	◆	◆		◆
M55681/10	CDR34	◆	◆		◆
M55681/11	CDR35	◆	◆		◆
M55681/13	CDR37				◆
Switch Mode Power Supply • MIL-PRF-49470					
M49470		◆	◆		
Switch Mode Power Supply • DSCC Drawing					
87106		◆	◆		
88011		◆	◆		



CERAMIC & TANTALUM		KEMET	KYOCERA AVX	Vishay
Ceramic • DSCC Drawing				
03028	MIL-PRF-55681	◆	◆	◆
03029	MIL-PRF-55681	◆	◆	◆
05001	MIL-PRF-55681	◆	◆	◆
05002	MIL-PRF-55681	◆	◆	◆
05003	MIL-PRF-55681	◆	◆	◆
05006	MIL-PRF-55681	◆	◆	◆
05007	MIL-PRF-55681	◆	◆	◆
06019	MIL-PRF-123	◆	◆	◆
06022	MIL-PRF-123	◆	◆	◆
09023	MIL-PRF-55681	◆	◆	◆
09024	MIL-PRF-55681	◆	◆	◆
09025	MIL-PRF-55681	◆	◆	◆
09026	MIL-PRF-55681	◆	◆	◆
09027	MIL-PRF-55681	◆	◆	◆
14004	MIL-PRF-55681	◆	◆	◆
14005	MIL-PRF-55681	◆	◆	◆
91019	MIL-PRF-123	◆	◆	◆
Tantalum • MIL-PRF-55365				
M55365/04	CWR06	◆	◆	◆
M55365/04	CWR09	◆	◆	◆
M55365/08	CWR11	◆	◆	◆
M55365/12	CWR15	◆	◆	◆
M55365/13	CWR16	◆	◆	◆
M55365/11	CWR19	◆	◆	◆
M55365/11	CWR26	◆	◆	◆
M55365/11	CWR29	◆	◆	◆

CERAMIC & TANTALUM		KEMET	KYOCERA AVX	Vishay
Tantalum • MIL-PRF-39003				
M39003/01	CSR13	◆	◆	◆
M39003/02	CSR09	◆	◆	◆
M39003/03	CSR23	◆	◆	◆
M39003/04	CSR91	◆	◆	◆
M39003/06	CSR33	◆	◆	◆
M39003/09	CSR21	◆	◆	◆
M39003/10	CSS13	◆	◆	◆
M39003/10	CSS33	◆	◆	◆
GR500	T210, T220, T240	◆	◆	◆
Tantalum • MIL-PRF-49137				
	CX01	◆	◆	◆
	CX02	◆	◆	◆
	CX05	◆	◆	◆
	CX06	◆	◆	◆
	CX12	◆	◆	◆
	CX16	◆	◆	◆
Tantalum • MIL-PRF-39006				
M39006/09	CLR65	◆	◆	◆
M39006/21	CLR69	◆	◆	◆
M39006/22	CLR79	◆	◆	◆
M39006/25	CLR81	◆	◆	◆
M39006/30	CLR90	◆	◆	◆
M39006/31	CLR91	◆	◆	◆
M39006/33	CLR93	◆	◆	◆
Tantalum • DSCC Drawing				
02002	MIL-PRF-55365	◆	◆	◆

CERAMIC & TANTALUM		KEMET	KYOCERA AVX	Vishay
02006	MIL-PRF-55365	◆	◆	◆
04003	HE	◆	◆	◆
04021	MIL-PRF-3965	◆	◆	◆
04022	MIL-PRF-39006	◆	◆	◆
04033	MIL-PRF-3965	◆	◆	◆
04051	MIL-PRF-55365	◆	◆	◆
04052	MIL-PRF-55365	◆	◆	◆
04053	MIL-PRF-55365	◆	◆	◆
05017	MIL-PRF-83500/1	◆	◆	◆
06013	MIL-PRF-39006/22	◆	◆	◆
06014	MIL-PRF-39006/25	◆	◆	◆
06015	MIL-PRF-39006/30	◆	◆	◆
06016	MIL-PRF-39006/31	◆	◆	◆
07016	MIL-PRF-55365	◆	◆	◆
09009	MIL-PRF-55365	◆	◆	◆
10004	MIL-PRF-39006	◆	◆	◆
10011	MIL-PRF-39006-HE3	◆	◆	◆
11020	MIL-PRF-55365	◆	◆	◆
13008	MIL-PRF-55365	◆	◆	◆
13017	MIL-PRF-39006	◆	◆	◆
14002	MIL-PRF-55365	◆	◆	◆
15005	MIL-PRF-39006	◆	◆	◆
95158	MIL-PRF-55365	◆	◆	◆
93026	MIL-PRF-39006	◆	◆	◆
Tantalum • Super Tan Product				
ST, STA, STE, TWA		◆	◆	◆
T16,T18		◆	◆	◆

WIREWOUND & DSCC DRAWING		OHMITE	TT Electronics / IRC	Vishay	Vishay Precision Group
Wirewound • MIL-R-26					
RW20		◆	◆	◆	◆
RW21		◆	◆	◆	◆
RW22		◆	◆	◆	◆
RW23		◆	◆	◆	◆
RW24		◆	◆	◆	◆
RW29		◆	◆	◆	◆
RW30		◆	◆	◆	◆
RW31		◆	◆	◆	◆
RW32		◆	◆	◆	◆
RW33		◆	◆	◆	◆
RW34		◆	◆	◆	◆
RW35		◆	◆	◆	◆
RW36		◆	◆	◆	◆
RW37		◆	◆	◆	◆
RW38		◆	◆	◆	◆
RW39		◆	◆	◆	◆
RW47		◆	◆	◆	◆
RW67		◆	◆	◆	◆
RW68		◆	◆	◆	◆
RW69		◆	◆	◆	◆
RW70		◆	◆	◆	◆
RW74		◆	◆	◆	◆

WIREWOUND & DSCC DRAWING		OHMITE	TT Electronics / IRC	Vishay	Vishay Precision Group
Wirewound • MIL-R-26 cont.					
RW78		◆	◆	◆	◆
RW79		◆	◆	◆	◆
RW80		◆	◆	◆	◆
RW81		◆	◆	◆	◆
Wirewound • MIL-R-18546					
RE60		◆	◆	◆	◆
RE65		◆	◆	◆	◆
RE70		◆	◆	◆	◆
RE75		◆	◆	◆	◆
RE77		◆	◆	◆	◆
RE80		◆	◆	◆	◆
Wirewound • MIL-R-18546					
RWR71		◆	◆	◆	◆
RWR74		◆	◆	◆	◆
RWR78		◆	◆	◆	◆
RWR80		◆	◆	◆	◆
RWR81		◆	◆	◆	◆
RWR82		◆	◆	◆	◆
RWR84		◆	◆	◆	◆
RWR89		◆	◆	◆	◆

WIREWOUND & DSCC DRAWING		OHMITE	TT Electronics / IRC	Vishay	Vishay Precision Group
Wirewound • MIL-R-39009					
RER40		◆	◆	◆	◆
RER45		◆	◆	◆	◆
RER50		◆	◆	◆	◆
RER55		◆	◆	◆	◆
RER60		◆	◆	◆	◆
RER65		◆	◆	◆	◆
RER70		◆	◆	◆	◆
RER75		◆	◆	◆	◆
DSCC Drawing					
90048		◆	◆	◆	◆
93030		◆	◆	◆	◆
97004		◆	◆	◆	◆
98020		◆	◆	◆	◆
98021		◆	◆	◆	◆
99011		◆	◆	◆	◆
14006		◆	◆	◆	◆
14007		◆	◆	◆	◆
14008		◆	◆	◆	◆
15002		◆	◆	◆	◆
15003		◆	◆	◆	◆
15004		◆	◆	◆	◆
15007		◆	◆	◆	◆
M49462		◆	◆	◆	◆

RESISTORS		TT Electronics / IRC	Vishay	Vishay Precision Group
Metal Film • MIL-R-22684				
RL07		◆	◆	◆
RL20		◆	◆	◆
Metal Film • MIL-R-39017				
RLR05		◆	◆	◆
RLR07		◆	◆	◆
RLR20		◆	◆	◆
RLR32		◆	◆	◆
Metal Film • MIL-R-10509				
RN50		◆	◆	◆
RN55		◆	◆	◆
RN60		◆	◆	◆
RN65		◆	◆	◆
RN70		◆	◆	◆
Metal Film • MIL-R-55342				
M55342/01 ~ /03		◆	◆	◆
M55342/04		◆	◆	◆
M55342/05		◆	◆	◆
M55342/06		◆	◆	◆
D55342/07		◆	◆	◆
M55342/08		◆	◆	◆
M55342/09		◆	◆	◆
M55342/10		◆	◆	◆
M55342/11		◆	◆	◆
M55342/12		◆	◆	◆
M55342/13		◆	◆	◆

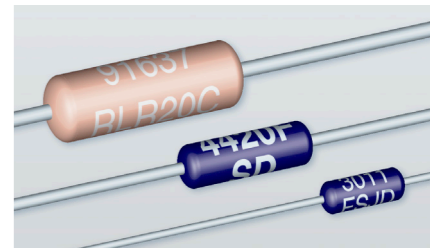
RESISTORS		TT Electronics / IRC	Vishay	Vishay Precision Group
Metal Film • DSCC Drawing				
M32159		◆	◆	◆
Metal Film • MIL-R-55182				
RNC50		◆	◆	◆
RNC55		◆	◆	◆
RNC60		◆	◆	◆
RNC65		◆	◆	◆
RNC90		◆	◆	◆
Metal Film • MIL-R-10509				
RNR50		◆	◆	◆
RNR55		◆	◆	◆
RNR60		◆	◆	◆
RNR65		◆	◆	◆
RNR70		◆	◆	◆
RNR75		◆	◆	◆
Current Sense • DSCC Drawing / EEE INST with Kelvin Connections				
08003/303119		◆	◆	◆
07011/303144		◆	◆	◆
07012/303145		◆	◆	◆
Current Sense • DSCC Drawing / EEE INST				
06009		◆	◆	◆
06010		◆	◆	◆
06011		◆	◆	◆
06012		◆	◆	◆
Current Sense Molded Flexible Terminations • DSCC Drawing/EEE INST				
06003		◆	◆	◆

RESISTORS		TT Electronics / IRC	Vishay	Vishay Precision Group
Metal Glaze Melf Resistors • DSCC Drawing				
94047		◆	◆	◆
94048		◆	◆	◆
95006		◆	◆	◆
95011		◆	◆	◆
Molded Flexible Terminations • DSCC Drawing / EEE INST				
06020 / 303139		◆	◆	◆
06021 / 303140		◆	◆	◆
93075		◆	◆	◆
93076		◆	◆	◆
93077		◆	◆	◆
Through Hole • DSCC Drawing / EEE INST				
89039 / 303143		◆	◆	◆
87026 / 303143L		◆	◆	◆
Trimmer • DSCC Drawing				
87126		◆	◆	◆
Wrap-around Surface Mount • DSCC Drawing / EEE INST				
06002		◆	◆	◆
07024 / 303134		◆	◆	◆
07025 / 303135		◆	◆	◆
03010 / 303136		◆	◆	◆

NETWORK		TT Electronics / IRC	Vishay
Network • MIL-R-83401			
M83401/01		◆	◆
M83401/02		◆	◆
M83401/03		◆	◆
M83401/04		◆	◆
M83401/05		◆	◆
M83401/06		◆	◆
M83401/07		◆	◆
M83401/08		◆	◆
M83401/09		◆	◆
M83401/10		◆	◆
M83401/13		◆	◆
M83401/14		◆	◆
M83401/15		◆	◆
M83401/18		◆	◆
M83401/19		◆	◆
M83401/21		◆	◆
M83401/22		◆	◆
M83401/23		◆	◆
M83401/24		◆	◆
Network • MIL-R-83401 • DSCC Drawing			
87012		◆	◆
87013		◆	◆
87016		◆	◆
87017		◆	◆
87018		◆	◆
87045		◆	◆

NETWORK		TT Electronics / IRC	Vishay
Network • MIL-R-83401 • DSCC Drawing			
87053		◆	◆
87067		◆	◆
87068		◆	◆
87071		◆	◆
87073		◆	◆
87074		◆	◆
VARIABLE RESISTORS			
Variable Resistors • MIL-PRF-22			
RP05 ~ RP55		◆	◆
Variable Resistors • MIL-R-22097			
RJ12tt		◆	◆
RJ22		◆	◆
RJ24		◆	◆
RJ26		◆	◆
RJ50		◆	◆
Variable Resistors • MIL-R-27208			
RT12		◆	◆
RT22		◆	◆
RT24		◆	◆
RT26		◆	◆

VARIABLE RESISTORS		Bourns	OHMITE
Variable Resistors • MIL-R-39035			
RJR24		◆	◆
RJR26		◆	◆
RJR50		◆	◆
Variable Resistors • MIL-R-39015			
RTR22		◆	◆
RTR24		◆	◆
POTENTIOMETERS			
Potentiometers • MIL-PRF-94/3			
RV6		◆	◆
Potentiometers • MIL-PRF-94/5			
RV4		◆	◆



FUSES FUSEHOLDERS & VARISTORS	EATON	Littelfuse
Fuses • MIL-PRF-15160		
F01A	◆	
F02A	◆	
F02B	◆	
F03A	◆	
F03B	◆	
F06A	◆	
F09A	◆	◆
F09B	◆	◆
F10A	◆	
F15A	◆	
F15BR	◆	
F16A	◆	
F16BR	◆	
F19BR	◆	
F20BR	◆	
F40A	◆	
F60C	◆	◆
F61C	◆	
F62C	◆	
F63C	◆	
F64C	◆	
F65C	◆	
F66C	◆	
FA01	◆	
Fuses • MIL-PRF-23419		
FM01A	◆	
FM02A		◆
FM04A		◆
FM07A		◆
FM08A	◆	◆
FM09A	◆	
FM09B	◆	
FM10A		◆
Fuseholders • MIL-PRF-19208		
FHL10G	◆	
FHL10U	◆	
FHL11G	◆	
FHL11U	◆	
FHL12G	◆	
FHL12U	◆	
FHL17G1	◆	
FHL18G1-1	◆	
FHL18G1-2	◆	
FHL18G1-3	◆	
FHL18G1-4	◆	
FHL18G1-5	◆	
FHL18G1-6	◆	
FHL18G1-7	◆	
FHL18G1-8	◆	
FHL18G1-9	◆	
FHL22W	◆	
FHL23W	◆	
FHL29G-1	◆	
FHL29G-2	◆	
FHL29G-3	◆	
FHL29G-4	◆	
FHL29G-5	◆	
FHL29G-6	◆	
FHL30G-1	◆	
FHL30G-2	◆	

FUSES FUSEHOLDERS & VARISTORS	EATON	Littelfuse
Fuseholders • MIL-PRF-19208 cont.		
FHL30G-3	◆	
FHL30G-4	◆	
FHL30G-5	◆	
FHL30G-6	◆	
FHL57G	◆	
FHN19G	◆	
FHN20G	◆	◆
FHN23W	◆	
FHN26G1	◆	
FHN26G2		◆
FHN26W		◆
FHN31G1	◆	
FHN42W	◆	
FHN55W	◆	◆
Varistors • MIL-R-83530		
M83530/1		◆
87063-001 ~ 052		◆
90065-012 ~ 022		◆
INDUCTORS		
	Delevan	Gowanda
MIL-PRF-15305		
MS14046	◆	◆
MS14052	◆	◆
MS18130	◆	◆
MS21422	◆	◆
MS75008	◆	◆
MS75083	◆	◆
MS75084	◆	◆
MS75085	◆	◆
MS75087	◆	◆
MS75088	◆	◆
MS75089	◆	◆
MS75101	◆	◆
MS75103	◆	◆
MS90538	◆	◆
MS90539	◆	◆
MS90540	◆	◆
MS90541	◆	◆
MS90542	◆	◆
MS91189	◆	◆
MIL-PRF-83446		
M83446	◆	◆
MIL-PRF-39010		
M39010/01	◆	◆
M39010/02	◆	◆
M39010/03 ~ /10	◆	◆
MIL-PRF-27		
M27/356		
M27/367	◆	◆
M27/368	◆	◆
M27/370	◆	◆
M27/372		

FILTERS	Gowanda	KYOCERA AVX	Spectrum Control
MIL-PRF-15733			
M15733/23			◆
M15733/24			◆
M15733/25			◆
M15733/26			◆
M15733/27			◆
M15733/28			◆
M15733/33			◆
M15733/34			◆
M15733/38			◆
M15733/39			◆
M15733/40			◆
M15733/43			◆
M15733/44			◆
M15733/46			◆
M15733/48			◆
M15733/49			◆
M15733/51			◆
M15733/54			◆
M15733/56			◆
M15733/57			◆
M15733/58			◆
M15733/61			◆
M15733/62			◆
M15733/66			◆
M15733/67			◆
MIL-PRF-28861			
M28861/01		◆	◆
M28861/02			◆
M28861/03			◆
M28861/04			◆
M28861/05			◆
M28861/12	◆	◆	
EMI Filters			
M28861	◆	◆	◆
M15733			◆

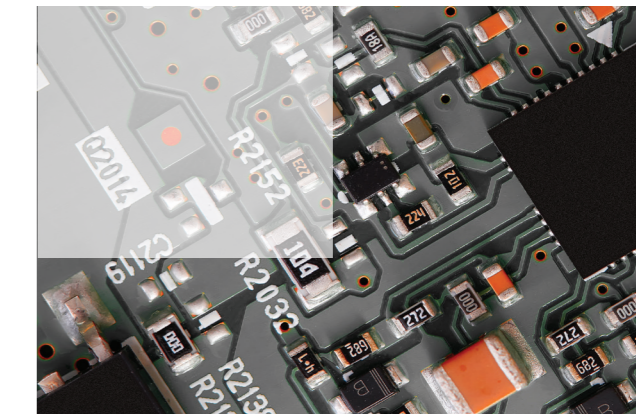


DISCRETE SEMICONDUCTORS	Bourns	EATON	Littelfuse/IXYS	ROHM Semiconductor	TT Electronics / Semel	Vishay
Diodes						
Diode Arrays		◆	◆		◆	
Schottky				◆	◆	◆
Silicon Carbide			◆	◆	◆	
Small Signal				◆	◆	◆
TVS	◆	◆	◆	◆	◆	◆
Zener				◆	◆	◆
IGBTs						
Discrete IGBTs				◆		
IGBT Modules			◆		◆	◆
MOSFETs						
High-voltage			◆	◆	◆	◆
Low-voltage				◆	◆	◆
Modules			◆	◆	◆	
Silicon Carbide (SiC)			◆	◆	◆	
Gallium Nitride (GaN)						
Voltage Regulators					◆	◆
Rectifiers						
Rectifiers	◆				◆	◆
Schottky Rectifiers					◆	◆
SCRs			◆			◆
◆ MIL-PRF-19500						

SWITCHES	Honeywell
Basic Switch	
M8805/90	◆
MS16106	◆
MS25008	◆
MS25253	◆
MS25383	◆
MS27216	◆
MS27717	◆
MS27718	◆
MS27719	◆
MS27720	◆
MS27721	◆
Enclosed Switch MICRO SWITCH™	
M8805/55	◆
Environmentally Sealed Switch	
M8805/65	◆
MS16106	◆
MS21320	◆
MS21321	◆
MS24420	◆
MS27994	◆
Large Basic MICRO SWITCH™	
M8805/1	◆
Limit Switch	
MS24594	◆
Pressure Switch • MIL-PRF-8805	
1HPAB1	◆
1HPAC1	◆
1HPAR1	◆

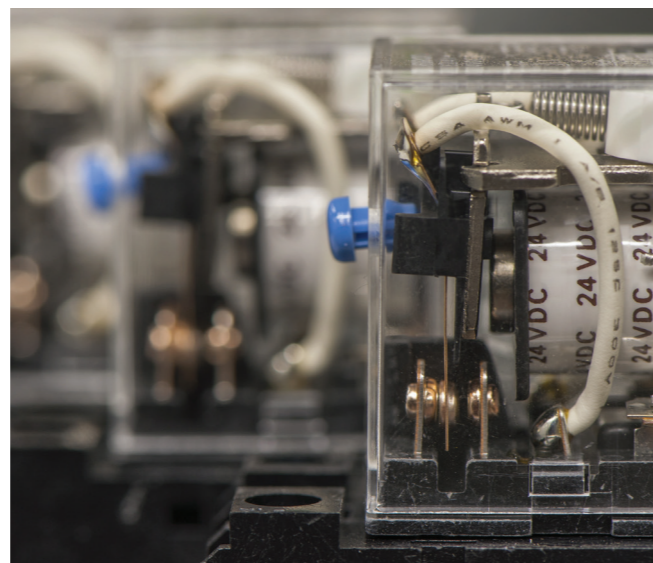
DISCRETE SEMICONDUCTORS	Bourns	EATON	Littelfuse/IXYS	ROHM Semiconductor	TT Electronics / Semel	Vishay
Transistors						
Bi-Polar				◆	◆	◆
Small Signal				◆	◆	◆
Silicon Carbide						
Schottky Diode				◆	◆	◆
MOSFETs			◆	◆	◆	
Modules				◆		
Logic ICs						
Control Logic				◆		
I/O Expansion Logic				◆		
Analog				◆		
Interface Logic				◆		

SWITCHES	Honeywell
Sealed Switch	
M5594	◆
M8805/80	◆
MS21320	◆
MS21321	◆
MS24331	◆
MS24420	◆
MS25011	◆
Subminiature Basic Switch	
M8805/106	◆
M8805/109	◆
M8805/23	◆
MS24547	◆
MS25085	◆



SEALED TOGGLE SWITCH		C&K	Honeywell
M5594/1			◆
M5594/2			◆
M5594/3			◆
M5594/6			◆
M8805/26			◆
M8805/92			◆
M8805/98			◆
MS24523			◆
MS24524			◆
MS24525			◆
MS24658			◆
MS24659			◆
MS24660			◆
MS27406			◆
MS27407			◆
MS27408			◆
MS27409			◆
MS27716			◆
MS27717			◆
MS27718			◆
MS27719			◆
MS27720			◆
MS27721			◆
MS27722			◆
MS27723			◆
MS27724			◆
MS27734			◆
MS27735			◆
MS27736			◆
MS27737			◆
MS27738			◆
MS27739			◆
MS27753			◆
MS27754			◆
MS27781			◆
MS27782			◆
MS27783			◆
MS27784			◆
MS27785			◆
MS27786			◆
MS27787			◆
MS27788			◆
MS27789			◆
MS27790			◆
MS27793			◆
M83731/9-211		◆	
M83731/9-231		◆	
M83731/9-261		◆	
M83731/9-271		◆	
M83731/9-311		◆	
M83731/9-341		◆	
M83731/10-211		◆	
M83731/10-231		◆	
M83731/10-261		◆	
M83731/10-271		◆	
M83731/10-311		◆	
M83731/10-321		◆	
M83731/10-331		◆	
M83731/10-341		◆	
M83731/10-351		◆	
M83731/9-212		◆	
M83731/9-232		◆	
M83731/9-262		◆	

SEALED TOGGLE SWITCH		C&K	Honeywell
M83731/9-272		◆	
M83731/9-312		◆	
M83731/9-342		◆	
M83731/10-212		◆	
M83731/10-232		◆	
M83731/10-262		◆	
M83731/10-272		◆	
M83731/10-312		◆	
M83731/10-322		◆	
M83731/10-332		◆	
M83731/10-342		◆	
M83731/10-352		◆	
M83731/13-211		◆	
M83731/13-231		◆	
M83731/13-261		◆	
M83731/13-271		◆	
M83731/13-311		◆	
M83731/13-341		◆	
M83731/14-211		◆	
M83731/14-231		◆	
M83731/14-261		◆	
M83731/14-271		◆	
M83731/14-311		◆	
M83731/14-321		◆	
M83731/14-331		◆	
M83731/14-341		◆	
M83731/14-351		◆	
M83731/15-211		◆	
M83731/15-231		◆	
M83731/15-261		◆	
M83731/15-271		◆	
M83731/15-311		◆	
M83731/15-341		◆	
M83731/16-211		◆	
M83731/16-231		◆	
M83731/16-261		◆	
M83731/16-271		◆	
M83731/16-311		◆	
M83731/16-321		◆	
M83731/16-331		◆	
M83731/16-341		◆	
M83731/16-351		◆	



RELAYS		Amphenol PCD	TE Connectivity
NASA S-311-P-754	Relays		◆
MIL-R-39016	Low power Emech		◆
MIL-R-5757	Low power Emech		◆
MS27245	Low power Emech		◆
MS27247	Low power Emech		◆
MS27418			◆
M83726/28,29,30,31			◆
MIL-PRF-28750/5	Solid state		◆
MIL-PRF-28750/6	Solid state		◆
MIL-PRF-28750/7	Solid state		◆
MIL-PRF-28750/9	Solid state		◆
MIL-PRF-28750/10	Solid state		◆
MIL-PRF-28776	Hybrid		◆
MIL-PRF-6106	Contactors		◆
MIL-PRF-6106/19	Contactors		◆
MIL-PRF-83536	Low power Emech		◆
MS24185	Contactors		◆
MS27750	Contactors		◆
AN3303-2	Contactors		◆
AN3308-2	CII Contactors		◆
AN3320-1	CII Contactors		◆
AN3324-1	CII Contactors		◆
MIL-R-83725	High power		◆
MIL-R-83726/13	Hybrid & solid state time delay relays		◆
MIL-DTL-12883		◆	◆
M39016			◆

CIRCUIT BREAKERS		Sensata Airpax
MIL-PRF-39019		◆

SENSORS		Honeywell
Precision Thermal Sensors • MIL-PRF-24236-819-75		
M24236/1-001 ~ M24236/1-1810		◆
Proximity Sensors		
300 FW	MIL-STD-810B	◆
21 FW	MIL-STD-461E	◆
23 FW	MIL-STD-461E	◆
Resistive Optical		
M39002/01		◆
Resolvers • RTCA DO-160D		
Cased - Brushless Dual Speed		◆
Cased - Brushless Single Speed		◆
Pancake - Brushless Multi-Speed		◆
Variable Reluctance Speed Sensors • MIL-STD-202F, Method 204D		
VRS General Purpose		◆
VRS Hazardous Location		◆
VRS High Output		◆
VRS High Resolution		◆
VRS Power Output		◆

THERMOSTATS • BASIC SWITCH		Honeywell
3000		◆
3153		◆
3200		◆
3500		◆
3MS1		◆



Why Buy from the Specialist in Electronic Component Distribution?

Founded in 1971, TTI has steadily grown to become the world's leading interconnect, passive, electromechanical and discrete component distributor in the industry. The company was founded on the premise that passive component purchasing could be made more efficient by offering product specialization, customer-driven service, and proprietary supply chain solutions – and do it all with secure 24/7 access.



Knowledgeable Product Experts

Specialization allows TTI product managers to provide much better product insight to support your manufacturing from design through production. TTI Specialists' commitment to our customers is key to our continued success.



Broader and Deeper Inventories

TTI maintains extensive component inventories, stocking more than 500,000 part numbers in North America and over 850,000 globally – that's more interconnect, passive, electromechanical and discrete inventory available than from any other source.



Consult With a TTI Supply Chain Team

TTI Supply Chain Excellence on a global scale is a collaborative process. Our people- and parts-focused approach provides you with a tailored supply chain solution that fits your needs. Based on a detailed analysis of your current purchasing process, we design an optimized solution including a set of Key Performance Indicators (KPI) that facilitate continuous improvement.

Asia Sales Offices

Greater China

Beijing	T: +86 10 6566 4748
Chengdu	T: +86 512 8957 0488
Dalian	T: +86 10 6566 4748
Dongguan	T: +86 769 8608 8638
Guangzhou	T: +86 769 8608 8638
Ningbo	T: +86 21 5174 2088
Qingdao	T: +86 10 6566 4748
Shanghai	T: +86 21 5174 2088
Shenzhen	T: +86 755 2269 1988
Suzhou	T: +86 512 8957 0488
Wuhan	T: +86 512 8957 0488
Xiamen	T: +86 592 5751 803
Hong Kong	T: +852 3658 4700
Taiwan - Taichung	T: +886 2 2796 8305
Taiwan - Taipei	T: +886 2 2796 8305

South Asia

India	
Bangalore	T: +91 80 4530 1900
New Delhi	T: +91 80 4530 1957
Pune	T: +91 80 4530 1988
Indonesia	T: +65 6788 9200
Korea	
Seoul	T: +82 2 376 8171
Gumi	T: +82 2 376 8171
Malaysia	
Kuala Lumpur	T: +60 4 659 2011
Penang	T: +60 4 659 2011
Philippines	T: +63 2 654 5599
Singapore	T: +65 6788 9200
Thailand	T: +66 2 694 2277
Vietnam	
Hanoi	T: +84 28 3822 9468
Ho Chi Minh	T: +84 28 3822 9468

QUALITY AND RELIABILITY

TTI is the first distributor to have all global warehouse locations ISO registered and currently are certified to ISO 9001 with AS9100C and ISO 14001 in North America, ISO 9001, EN 9100, ISO 14001 and EN 9120 in TTI Europe and ISO 9001 in TTI Asia.

Year after year, customers rate our inventory availability, on-time delivery and accuracy among the very best in the industry – call your local TTI Specialists at +65 6510 1846 and discover why.

