



TTI ASIA Line Card

www.ttiasia.com

Alternative Energy • Medical • Communications • Transportation • Industrial



The Global Specialist in Electronic Component Distribution

Why TTI?

Founded in 1971, TTI steadily has grown to become the world's largest specialist distributor for Passive, Discrete, Connector and Electromechanical components. TTI ASIA is head-quartered in Singapore, with three dedicated ISO 9001:2008 certified warehouses located in Hong Kong, Shanghai and Singapore. TTI is well positioned to support Greater China and South Asia, with over 400 staff covering 24 locations in 12 countries.

Product Knowledgeable Experts

TTI has a team of specialists with more product experience and knowledge than any other distributor. All TTI employees participate in company-wide training programs, plus every one of our sales branches has a team of product managers on-site to provide the extra support that customers need. Through the years these exceptional specialists have become, and remained, the most knowledgeable in the electronic component industry.

Broader and Deeper Inventories

TTI maintains extensive inventories by stocking more than 500,000 parts with over 80% available for immediate delivery. That's more interconnect, passive, electro-mechanical, and discrete parts than from any other source. We remain committed to breadth and depth of inventory, ensuring availability of C and D class parts as well as commodity parts.

Leading Edge Technology Products

The manufacturers TTI partners with, are the companies that lead the industry in new component technologies. For customers, this means that TTI enlists the help of the manufacturers who can help solve any design challenge. Our product groups also focus on new product introductions to ensure we have the very latest and most technologically-advanced products readily available from stock.

Value Added Logistic Services

From technical application advice to customized logistical solutions; TTI can add value throughout the supply chain by reducing acquisition costs, improving material flow through forecast analysis, provide safety stock and reduce receipt handling through consolidated shipments. These are just some areas that TTI can review with your company to streamline your internal supply chain and help reduce hidden material costs.

Global Distribution Centers

TTI has more than 1.3 million square feet of automated warehousing in North America, Europe, and Asia. All are linked into a global warehouse management system that provides superior customer service and overall business efficiencies. Wherever you are in the world, TTI can support you.

Quality and Reliability

TTI has a passion for excellence, and after 40 years experience our on-time delivery and quality levels are the best in class. TTI implemented Total Quality Management in 1989 and have been ISO registered since 1993, we were the first distributor to have all of our global warehouse locations ISO registered and have since upgraded to ISO9001:2008. TTI has one global documentation system that ensures that every TTI branch and warehouse in the world follow the same processes. Year after year, customers rate our quality and management practices to be among the very best in the industry. This is especially important when the products are the typical high mix, low value parts on which we have built our reputation.

For more information contact:
FeedbackTTIAsia@ttiinc.com

THE SPECIALIST

Authorized Distributor of These Manufacturers and Their Brands



**When it comes to IP&E and discrete components,
TTI is your go-to resource with the broadest and deepest inventory,
and a reputation for quality and on-time delivery second to none.**

3M

AirBorn (*Asean region only*)

AMPHENOL

- Advanced Sensors
- Aerospace
- AirLB
- AITC
- ANYTEK
- Canada
- Commercial
- Connex
- FCI Electronics
- Fiber Optics
- High Speed Products
- Industrial
- LTW
- Matrix
- PCD
- RF
- Sine
- Socapex
- Spectra Strip
- SV Microwave
- Teradyne Connection (TCS)
- Tuchel

API DELEVAN

AVX

- Elco

BOURNS

- J.W. Miller
- Komatsulite
- Murata Trimming
Potentiometer Business

C&K COMPONENTS

CDE (CORNELL DUBILIER)

- Illinois Capacitor

DELPHI CONNECTION SYSTEMS

- FCI Automotive

EATON

- Bussmann
- Coiltronics
- PowerStor

EPCOS

HONEYWELL

ITT CANNON

KEMET

- Arcotronics
- Evox Rifa
- NEC TOKIN

KNOWLES CAPACITOR

- Syfer
- DLI
- Novacap
- Voltronics

KOA

KYOCERA

LELON

LITTELFUSE

- Hamlin
- Littelfuse Automotive
- Teccor

MOLEX

- Affinity Medical
- Brad®
- FCT
- Flamar
- GWconnect®
- NuCurrent
- Oplink
- Phillips-Medisize
- Polymicro Technologies™
- ProTek Medical
- Sensorcon
- SDP Telecom
- Soligie
- Temp-Flex
- Woodhead
- Vasa Applied Technologies

MURATA

- Murata Power Solutions

NICHICON

OHMITE

OMRON

PANASONIC

- Electric Works
- Industrial Devices

PHOENIX CONTACT

PKC GROUP

PULSE

ROHM

SOURIAU

SPECTRUM CONTROL

TDK

- EPCOS

TE CONNECTIVITY

- AGASTAT
- ALCOSWITCH
- AMP
- AMP NETCONNECT
- AUGAT
- AXICOM
- CII Technologies
- Corcom
- Deutsch
- ELCON
- HARTMAN
- HTS
- KILOVAC
- MADISON CABLE
- Measurement Specialties
- MICRODOT
- NANONICS
- OEG
- Potter & Brumfield
- Raychem
- SCHRACK

TT ELECTRONICS

- BI Technologies
- IRC
- Optek
- Semelab
- Welwyn

UNITED CHEMI-CON

VISHAY

- Angstrohm
- BCcomponents
- Beyschlag
- Cera-Mite
- Dale
- Draloric
- Electro-Films
- Huntington / Milwaukee
- MCB
- Roederstein
- Semiconductors
- Sfernice
- Siliconix
- Spectrol
- Sprague
- Techno
- Thin Film
- Vitramon

VISHAY PRECISION GROUP

WIMA

YAGEO

- Phycomp

Resistors

FILM	MANUFACTURERS																	
	Bourns	KOA	OHMTE	Panasonic	TE Connectivity	TT Electronics	IRC	Welwyn	Vishay	Angstrom	BCcomponents	Dale	Electro-Films	Sternice	Techno	Thin Film	Vishay Precision Group	Yageo
METAL FILM																		
Discrete Chip		◆	◆	◆	◆		◆	◆			◆		◆	◆	◆	◆	◆	
Flame Proof		◆	◆	◆	◆	◆	◆	◆		◆	◆	◆	◆	◆	◆	◆	◆	◆
Fusible	◆			◆	◆	◆	◆	◆		◆	◆	◆	◆	◆	◆	◆	◆	◆
High Temp	◆	◆	◆	◆	◆	◆	◆	◆		◆	◆	◆	◆	◆	◆	◆	◆	◆
High Voltage		◆	◆	◆	◆	◆	◆	◆		◆	◆	◆	◆	◆	◆	◆	◆	◆
Matched Sets				◆	◆	◆	◆	◆	◆	◆	◆	◆	◆	◆	◆	◆	◆	◆
Melf /Cylindrical		◆		◆	◆	◆	◆	◆		◆	◆	◆	◆	◆	◆	◆	◆	◆
Metal Film	◆	◆	◆	◆	◆	◆	◆	◆	◆	◆	◆	◆	◆	◆	◆	◆	◆	◆
Metal Glaze				◆	◆	◆	◆	◆		◆	◆	◆	◆	◆	◆	◆	◆	◆
Metal Oxide		◆	◆	◆	◆	◆	◆	◆		◆	◆	◆	◆	◆	◆	◆	◆	◆
Precision	◆	◆	◆	◆	◆	◆	◆	◆	◆	◆	◆	◆	◆	◆	◆	◆	◆	◆
Thick Film Chip	◆	◆	◆	◆	◆	◆	◆	◆		◆	◆	◆	◆	◆	◆	◆	◆	◆
Thin Film Chip	◆	◆		◆	◆	◆	◆	◆	◆	◆	◆	◆	◆	◆	◆	◆	◆	◆
Trimable				◆	◆	◆	◆	◆		◆	◆	◆	◆	◆	◆	◆	◆	◆
Voltage Divider		◆		◆	◆	◆	◆	◆		◆	◆	◆	◆	◆	◆	◆	◆	◆



NETWORK	MANUFACTURERS														
	Bourns	KOA	OHMTE	Panasonic	TE Connectivity	TT Electronics	IRC	Welwyn	Vishay	Dale	Electro-Films	Techno	Thin Film	Vishay Precision Group	Yageo
Array	◆	◆	◆	◆	◆	◆	◆	◆	◆	◆	◆	◆	◆	◆	◆
Conformal Coated	◆	◆	◆	◆	◆	◆	◆	◆	◆	◆	◆	◆	◆	◆	◆
Custom		◆	◆	◆	◆	◆	◆	◆	◆	◆	◆	◆	◆	◆	◆
Integrated Passive	◆	◆	◆	◆	◆	◆	◆	◆	◆	◆	◆	◆	◆	◆	◆
Ladder	◆	◆	◆	◆	◆	◆	◆	◆	◆	◆	◆	◆	◆	◆	◆
Line Protection	◆			◆	◆	◆	◆	◆	◆	◆	◆	◆	◆	◆	◆
Molded		◆		◆	◆	◆	◆	◆	◆	◆	◆	◆	◆	◆	◆
Resistor / Capacitor	◆	◆	◆	◆	◆	◆	◆	◆	◆	◆	◆	◆	◆	◆	◆
SMT	◆	◆	◆	◆	◆	◆	◆	◆	◆	◆	◆	◆	◆	◆	◆
Surge	◆			◆	◆	◆	◆	◆	◆	◆	◆	◆	◆	◆	◆
Thick Film DIP	◆	◆		◆	◆	◆	◆	◆	◆	◆	◆	◆	◆	◆	◆
Thick Film SIP	◆	◆		◆	◆	◆	◆	◆	◆	◆	◆	◆	◆	◆	◆
Thin Film DIP	◆	◆		◆	◆	◆	◆	◆	◆	◆	◆	◆	◆	◆	◆
Thin Film SIP	◆	◆		◆	◆	◆	◆	◆	◆	◆	◆	◆	◆	◆	◆

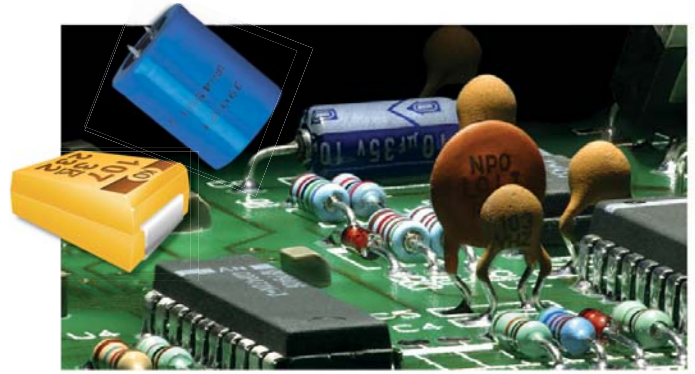
POTENTIOMETERS TRIMMERS	MANUFACTURERS													
	BI Technologies (TT Electronics)	Bourns	Honeywell	Murata	OHMTE	Panasonic	TE Connectivity	Vishay	BCcomponents	Dale	Sternice	Spectrol	Vishay Precision Group	Yageo
TRIMMING POTENTIOMETERS														
Adjustment Tools		◆	◆				◆					◆		
Carbon		◆	◆	◆		◆	◆							
Cermet		◆	◆	◆		◆	◆					◆	◆	
Counters		◆										◆	◆	
Multi-Turn		◆	◆	◆			◆	◆				◆	◆	
Open Frame		◆	◆	◆			◆	◆				◆	◆	
Sealed Frame		◆	◆	◆			◆	◆				◆	◆	
Single-Turn		◆	◆	◆			◆	◆				◆	◆	
Wirewound		▲			◆		◆	◆				◆	◆	
PRECISION PANEL CONTROL														
Carbon		◆						◆						
Cermet		◆	◆					◆				◆	◆	
Conductive Plastic		◆	◆					◆				◆	◆	
Dials / Knobs		◆	◆					◆				◆	◆	
Knobs		◆	◆		◆			◆				◆	◆	
Hybrid		◆	◆					◆				◆	◆	
Linear		◆	◆		◆			◆				◆	◆	
Metal Foil		◆	◆					◆				◆	◆	
Modular		◆	◆			◆		◆				◆	◆	
Motor Pot		◆	◆					◆				◆	◆	
Multi-Turn		◆	◆		◆			◆				◆	◆	
Non-Linear		◆	◆					◆				◆	◆	
Open Frame Slide		◆	◆					◆				◆	◆	
Rheostat		◆	◆		◆			◆				◆	◆	
Rotary		◆	◆		◆			◆				◆	◆	
Sealed Frame		◆	◆		◆			◆				◆	◆	
Single-Turn		◆	◆		◆			◆				◆	◆	
Wirewound		◆	◆		◆			◆				◆	◆	
SENSOR/ENCODER														
Attenuator								◆				◆	◆	
Encoders		◆	◆	◆				◆				◆	◆	
Linear Motion		◆	◆					◆				◆	◆	
Rotary		◆	◆	◆				◆				◆	◆	

POWER WIREWOUND CARBON & FOIL	MANUFACTURERS														
	Bourns	KOA	OHMTE	Panasonic	TE Connectivity	TT Electronics	IRC	Welwyn	Vishay	Dale	Huntington / Milwaukee	Sternice	Thin Film	Vishay Precision Group	Yageo
POWER/WIREWOUND															
Brackets / Hardware			◆	◆				◆	◆	◆	◆	◆	◆	◆	◆
Ceramic Composition			◆	◆				◆	◆	◆	◆	◆	◆	◆	◆
Commercial		◆	◆	◆	◆	◆	◆	◆	◆	◆	◆	◆	◆	◆	◆
Current Sense / Low Resistance	◆	◆	◆	◆	◆	◆	◆	◆	◆	◆	◆	◆	◆	◆	◆
Grid		◆						◆	◆	◆	◆	◆	◆	◆	◆
Industrial		◆	◆	◆	◆	◆	◆	◆	◆	◆	◆	◆	◆	◆	◆
Precision		◆	◆	◆	◆	◆	◆	◆	◆	◆	◆	◆	◆	◆	◆
Rheostat		◆	◆	◆	◆	◆	◆	◆	◆	◆	◆	◆	◆	◆	◆
Special Purpose		◆	◆	◆	◆	◆	◆	◆	◆	◆	◆	◆	◆	◆	◆
Tubular		◆	◆	◆	◆	◆	◆	◆	◆	◆	◆	◆	◆	◆	◆
Vitreous Enamel		◆	◆	◆	◆	◆	◆	◆	◆	◆	◆	◆	◆	◆	◆
CARBON															
Carbon Composition		◆	◆	◆	◆	◆	◆	◆	◆	◆	◆	◆	◆	◆	◆
Carbon Film		◆	◆	◆	◆	◆	◆	◆	◆	◆	◆	◆	◆	◆	◆
FOIL															
Bulk Metal Foil														◆	◆

● Lead & Lead-free compliant parts available ◆ Lead-free only parts available ▲ Lead-only compliant parts available

Capacitors

ALUMINUM	AVX	Cornell Dubilier/ Illinois Capacitor	EPCOS (TDK)	KEMET	Murata	Nichicon	Panasonic	PowerStor (Eaton)	Surge / Lelon	UCC	Vishay - BC Components
AC Motor Start		◆									◆
Axial Electrolytic		●	●	◆		◆				◆	●
EDLC / Supercapacitor	◆	◆	◆		◆	◆	◆	◆	◆	◆	◆
FlatPack Electrolytic		▲									
Polymer		◆		◆	◆	◆	◆			◆	◆
Radial Miniature		●	●	◆		◆	◆			◆	●
Screw Terminal		◆	◆	◆		◆				◆	◆
Snap-In		◆	◆	◆		◆				◆	◆
Surface Mount		◆	◆	◆		◆				◆	◆



FILM & MICA	AVX	Cornell Dubilier	KEMET	Nichicon	Panasonic	Spectrum Control (API Technologies)	Surge / Lelon	TDK - EPCOS	United Chemi-Con	Vishay	BCcomponents	Drabotic	Roederstein	WIMA
FILM														
Motor Run		◆	◆						◆					
Polyester	◆	●	◆	◆	◆	◆	◆	◆		●	●		●	◆
Polypropylene	◆	●	◆	◆	◆	◆	◆	◆		●	●		●	◆
Power Film	◆	●	◆	◆	◆	◆	◆	◆		●			◆	◆
Snubber	◆	●	◆	◆	◆	◆	◆	◆		●			◆	◆
Suppression X-Y (Safety Cap)		●	◆	◆	◆	◆	◆	◆		●	●	◆	●	◆
Surface Mount	◆	●	◆	◆	◆	◆	◆	◆		●			◆	◆
MICA														
Metal Clad		●												
Mica		●												
Surface Mount		●												



TANTALUM	AVX	KEMET	Panasonic	Vishay
Conformal Coated Chip	◆			●
Dipped Radial	●	●		●
Fail Safe / Fused Chip	●	●		●
Hermetic Through Hole		●		●
High Temperature Chip	●	●		●
Low ESR Chip	●	●		●
Low Profile Chip	●	●		●
Micro-Chip	◆	◆		◆
Molded Chip	●	●		●
Molded Through Hole		●		●
Niobium Chip	◆			
Polymer Chip	●	●	◆	●
Solid Metal Case Through Hole		●		●
Supertan				●
Wet Through Hole				●

CERAMIC	AVX	Cornell Dubilier	KEMET	Murata	Spectrum Control (API Technologies)	Syfer	TDK - EPCOS	Vishay	BCcomponents	Ceramate	Vitramon	United Chemi-Con	Yageo
Arrays	●		◆	◆	◆		◆						◆
Dip 2-Pin	◆						●						
Disc		◆	◆	◆			◆	◆	◆				
High Cap	●		●	◆		●	●	●				●	◆
High Q	◆		◆	◆	◆	◆	◆	◆				◆	
High Temperature	●		●	◆	◆	◆	◆	◆				◆	
High Voltage	●	◆	●	◆	◆	◆	◆	◆				◆	◆
Low Inductance							◆	◆					
Multi-Layer	●	●	◆	◆	◆	◆	●	●				●	◆
RF / Microwave	◆		◆	◆			●						◆
Safety							●	◆				◆	
Single Layer	●			◆			●	◆				◆	
Switch Mode	◆		◆		◆	●							
Tip and Ring	◆		◆	◆			●	◆				◆	
Trimmer				◆									

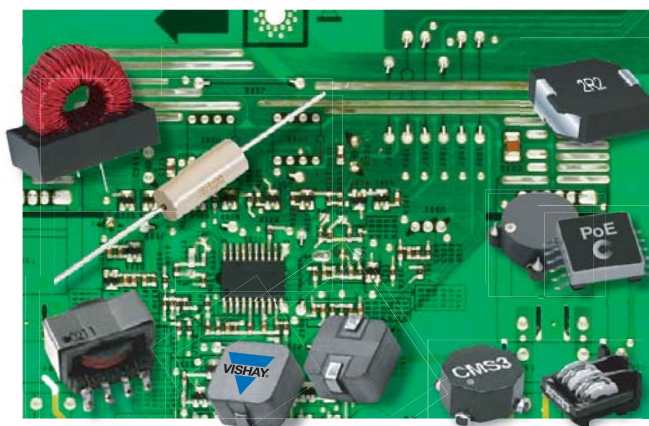
● Lead & Lead-free compliant parts available ◆ Lead-free only parts available ▲ Lead-only compliant parts available

Circuit Protection & Electromagnetic Components

PROTECTION DEVICES	AVX	Bourns	Bussmann (Eaton)	EPCOS (TDK)	KOA	Littlefuse - Teccor	Murata	Panasonic	TE Connectivity's Raychem	ROHM Semiconductors	TDK	United Chemi-Con	Vishay	BC Components	Dale	Semiconductors
	OVER CURRENT															
Automotive (Blade) Fuses		◆														
Axial Fuses		◆				◆										
Cartridge Fuses			●			◆										
NTC Thermistors	●		◆	◆		◆	◆			◆		◆	◆	◆		
Power (Electrical) Fuses		●				◆										
PTC Thermistors		◆	◆	◆		◆				◆		◆	◆	◆		
Radial Leaded Resettable Fuses (PTC)		◆	◆			◆		◆								
Radial Subminiature Fuses			◆			◆										
Surface Mount Resettable Fuses (PTC)		◆	◆	◆	◆			◆								
Surface Mount (125V+) Fuses		◆	●	◆	●			◆								
Thermal Cutoffs (TCO)				◆			◆									
Thin Film (Chip) Fuses	●	◆	◆	◆	◆		◆	◆				◆	◆			
OVER VOLTAGE																
Gas Discharge Tube (GDT)	●	◆	◆				◆		◆							
Line Protection Networks		◆														
Polymer ESD Suppression		◆	◆	◆			◆									
Protection Thyristors		◆				◆										
Surface Mount Varistors (MLV)	◆	◆	◆	◆	◆		◆			◆	◆	◆	◆			
Thermal MOV			◆	◆						◆	◆	◆	◆			
Through-Hole Varistors (MOV)		◆	◆	◆	◆		◆			◆	◆	◆	◆			
TVS Diodes	◆	◆	◆	◆	◆		◆		◆		◆	◆	◆			◆
TVS Diodes Arrays	◆			◆	◆				◆		◆	◆	◆			◆

Filters

EMI/RFI & RF	AVX	KEMET / NEC TOKIN	Murata	Panasonic	Pulse	Spectrum Control (API Technologies)	Syfer	TDK - EPCOS	TE Connectivity's Corcom	Yageo
	EMI / RFI Filters	●	●	●	●	●	●	●	●	◆
Feed-Thru Filters	●	●	●	●	●	●	●	●	◆	●
Noise Suppression Sheets		◆							◆	
RF / Microwave Filters	●		●	●	●	●	●	●		●
RF Module										
SAW Filters	◆		◆	◆		●		◆		
Surface Mount Filters	●		●	●	●	●	●	●		●



● Lead & Lead-free compliant parts available ◆ Lead-free only parts available

Magnetics

FERRITES INDUCTORS TRANSFORMERS	API Delevan	AVX	BI Technologies (TT Electronics)	Bourns - JW Miller	Coiltronics (Eaton)	KEMET / NEC TOKIN	KOA	Murata	Panasonic	Pulse	Spectrum Control (API Technologies)	TDK - EPCOS	Vishay - Dale	Yageo
	Air Coil Inductors	●	◆									●		
Common Mode Chokes	●	◆	◆	◆	◆		◆	◆	◆	◆	◆	◆	◆	
Custom Inductors	●			●				●	◆				●	
Ferrite Beads	◆		◆			◆	◆		◆			◆	◆	◆
Ferrite Cores/Clamp Filters	◆			◆				◆				◆	◆	◆
High Current Inductors	●	◆	●	◆	◆	◆		◆	◆	◆	◆	◆	◆	◆
Leaded Inductors	●		◆	◆	◆			◆	◆	◆	◆	◆	◆	◆
Military Inductors	●										●	●	●	●
Multilayer Inductors		◆	◆	◆		◆	◆	◆			◆	◆	◆	◆
Power Inductors	●	◆	●	◆	◆	◆		◆	◆	◆	◆	◆	◆	◆
RF Inductors	●	◆	◆	◆		◆	◆	◆	◆	◆	◆	◆	◆	◆
Thin Film Inductors		◆	◆					◆				◆	◆	◆
Toroid Inductors	◆		◆	◆	◆			◆			◆	◆	◆	◆
Transformers	●		◆	◆	◆			◆	◆	◆	◆	◆	◆	◆
Wirewound/Coil Inductors	●	◆	◆	◆	◆			◆	◆	◆	◆	◆	◆	◆

Piezo

SOUND DEVICES	AVX	Murata	Panasonic	TDK
	Buzzer	●	●	●
Microphone				
Receiver				
Ring		●		
Sensor		●		
Sounder		●	●	
Speaker		●	●	

Thermal Management

	Ohmite
	Extruded Heatsinks
Liquid Coldplates	●

Timing Devices

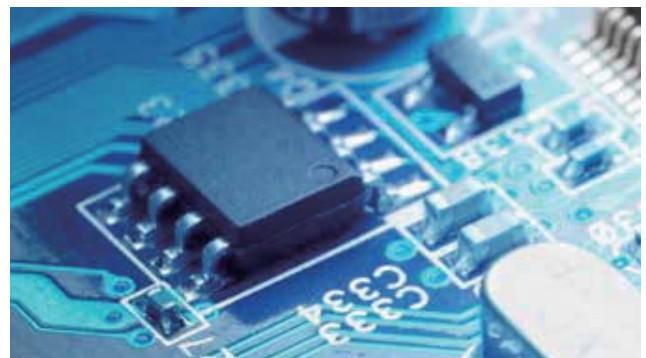
FREQUENCY CONTROL	API Technologies	Kyocera	Murata	Panasonic	TDK	Vishay - Dale
	Crystals	●	●	●		
Oscillators	●					●
Piezo Sound Devices		●	●	●	●	
Resonators		●	●	●	●	
Tuning Forks		●				

Discretes

	AVX	Bourns	Littelfuse - Teccor	Panasonic	ROHM Semiconductor	Semelab (TT Electronics)	Vishay
POWER SEMICONDUCTORS							
DIODES							
Arrays		◆	◆		◆	◆	◆
Schottky	◆			◆	◆	◆	◆
Small Signal		◆			◆	◆	◆
TVS	◆	◆	◆		◆	◆	◆
Zener		◆	◆	◆	◆	◆	◆
RECTIFIERS							
Bridge					◆		◆
Rectifiers		◆	◆		◆	◆	◆
Schottky					◆	◆	◆
SCRs		◆	◆				◆
THYRISTORS							
Protection			◆				
Switching (SCRs, Triacs)			◆				◆
TRANSISTORS							
Bipolar		◆			◆	◆	
Small Signal		◆		◆	◆	◆	
IGBTS							
Discrete					◆	◆	
Modules			◆		◆	◆	
MOSFETS							
High-voltage					◆	◆	◆
Low-voltage				◆	◆	◆	◆
Modules					◆	◆	◆



	Littelfuse	Murata (MPS)	OPTEK (TT Electronics)	Panasonic	ROHM Semiconductor	Vishay
OPTOELECTRONICS						
Digital Panel Meters		◆				
High Voltage Isolators			◆		◆	
Infrared Components			◆		◆	◆
LEDs - Indication				◆	◆	◆
LEDs Illumination <1W			◆	◆	◆	◆
LEDs - Illumination >1W			◆	◆	◆	◆
LED Displays					◆	◆
LED Drivers					◆	◆
LED Modules				◆	◆	◆
Optical Sensing	◆		◆	◆	◆	◆
Opto Solutions			◆			
Optocouplers						◆
Solid State Relays				◆		◆



	ROHM Semiconductor	Semelab (TT Electronics)	Vishay
ADDITIONAL DISCRETE COMPONENTS			
Analog	◆	◆	◆
LED Drivers	◆		◆
Motor Control Drivers	◆		◆
RF Diodes	◆	◆	◆
RF Transistors	◆	◆	◆
Voltage Regulators	◆	◆	◆

■ MIL Spec Discretes (DSCC)

◆ Lead-free only parts available ▲ Lead-only compliant parts available

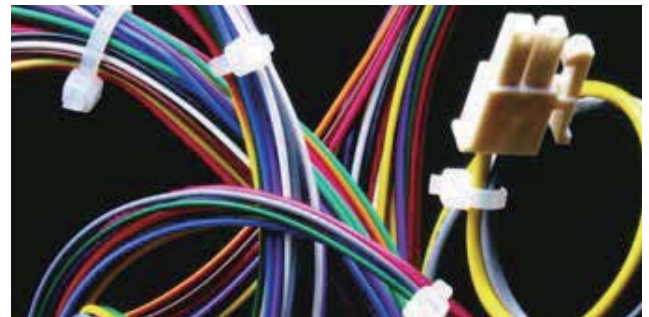
For more information contact:
FeedbackTTIASia@ttiinc.com

Interconnect

	3M	AirBorn	Amphenol	Amphenol Commercial	Amphenol PCD	Amphenol TCS	AVX - Elco	Bourns	FCI	Harwin	Molex	Omron	Panasonic	TE Connectivity
BACKPLANE, BOARD-TO-BOARD & DEVICE-TO-BOARD														
BACKPLANE														
10 Gb/s+ Solutions	◆	◆	◆					◆	◆	◆	◆	◆	◆	◆
2.00 mm (.079 inch)	◆					◆		◆	◆	◆	◆	◆	◆	◆
AOC Assemblies	◆		◆					◆	◆	◆	◆	◆	◆	◆
Assemblies (Backplane)	◆										◆	◆	◆	◆
ATCA/MicroTCA	◆					◆		◆	◆	◆	◆	◆	◆	◆
Cable Assemblies	◆	◆				◆		◆	◆	◆	◆	◆	◆	◆
Card Edge	◆	◆	◆					◆	◆	◆	◆	◆	◆	◆
Compact PCI	◆		◆			◆		◆	◆	◆	◆	◆	◆	◆
DIN 41612 (Eurocard)	◆					◆		◆	◆	◆	◆	◆	◆	◆
Fiber Optic	◆			◆				◆	◆	◆	◆	◆	◆	◆
Future Bus	◆							◆	◆	◆	◆	◆	◆	◆
Hard Metric	◆					◆		◆	◆	◆	◆	◆	◆	◆
High Speed Cable Assemblies	◆	◆	◆					◆	◆	◆	◆	◆	◆	◆
PCI Express	◆	◆	◆					◆	◆	◆	◆	◆	◆	◆
Power	◆	◆	◆	◆		◆		◆	◆	◆	◆	◆	◆	◆
RF / Ganged RF			◆					◆	◆	◆	◆	◆	◆	◆
SCA-2			◆					◆	◆	◆	◆	◆	◆	◆
BOARD TO BOARD														
Ball Grid Array (BGA)	◆				◆			◆	◆	◆	◆	◆	◆	◆
Battery Connectors					◆		◆	◆	◆	◆	◆	◆	◆	◆
Board Stacking	◆	◆			◆	◆		◆	◆	◆	◆	◆	◆	◆
Breakaway Headers	◆	◆						◆	◆	◆	◆	◆	◆	◆
Compression	◆	◆				◆		◆	◆	◆	◆	◆	◆	◆
Headers & Receptacles	◆	◆	◆		◆	◆		◆	◆	◆	◆	◆	◆	◆
Mezzanine/FPC	◆			◆	◆	◆		◆	◆	◆	◆	◆	◆	◆
Power	◆	◆	◆	◆	◆	◆		◆	◆	◆	◆	◆	◆	◆
Rotary Backlock												◆		
SCSI	◆	◆						◆	◆	◆	◆	◆	◆	◆
Shunts	◆	◆				◆		◆	◆	◆	◆	◆	◆	◆
Stacking	◆	◆	◆		◆	◆		◆	◆	◆	◆	◆	◆	◆
DEVICE TO BOARD														
AOC Assemblies	◆		◆					◆	◆	◆	◆	◆	◆	◆
DIMM						◆		◆	◆	◆	◆	◆	◆	◆
DIP	◆							◆	◆	◆	◆	◆	◆	◆
High Speed Cable Assemblies	◆	◆	◆					◆	◆	◆	◆	◆	◆	◆
PCMCIA	◆							◆	◆	◆	◆	◆	◆	◆
PGA	◆									◆	◆	◆	◆	◆
PLCC	◆								◆	◆	◆	◆	◆	◆
Rambus												◆	◆	◆
RIMM / DIMM / SIMM								◆	◆	◆	◆	◆	◆	◆
Rotary Backlock												◆		
SIP	◆									◆	◆	◆	◆	◆
Slot 1 & 2													◆	◆
SO DIMM & RIMM						◆		◆	◆	◆	◆	◆	◆	◆
Test / Burn-In Sockets	◆													◆
Transistor														◆



	3M	AirBorn	Amphenol	AVX - Elco	FCI	Harwin	Molex	Phoenix Contact	Smiths Connectors	Sourau (Esterline Connection Tech)	TE Connectivity
WIRE-TO-BOARD WIRE-TO-WIRE											
1.00 mm (.039 inch)	◆			◆	◆	◆	◆				◆
1.25 mm (.049 inch)				◆	◆	◆	◆				◆
1.27 mm (.050 inch)	◆			◆	◆	◆	◆				◆
2.00 mm (.079 inch)	◆			◆	◆	◆	◆	◆	◆	◆	◆
2.50 mm (.098 inch)				◆	◆	◆	◆	◆	◆	◆	◆
2.54 mm (.100 inch)	◆	◆		◆	◆	◆	◆	◆	◆	◆	◆
3.00 mm (.118 inch)	◆			◆	◆	◆	◆	◆	◆	◆	◆
3.68 mm (.145 inch)											◆
3.96 mm (.156 inch)								◆			◆
4.00 mm (.157 inch)											◆
4.20 mm (.165 inch)								◆			◆
5.00 mm (.197 inch)								◆	◆		◆
5.03 mm (.198 inch)								◆			◆
5.08 mm (.200 inch)								◆	◆		◆
6.35 mm (.250 inch)								◆	◆		◆
7.50 mm (.295 inch)								◆	◆		◆
9.00 mm (.354 inch)				◆							◆
10.00 mm (.393 inch)											◆
Bus Bar							◆	◆	◆		◆
Cable Assemblies	◆	◆	◆	◆	◆	◆	◆	◆	◆	◆	◆
Discrete Wire	◆			◆	◆	◆	◆	◆	◆	◆	◆
FPC / FPC				◆	◆	◆	◆	◆	◆	◆	◆
IDC Discrete Wire	◆			◆	◆	◆	◆	◆	◆	◆	◆
IDC / Mass Termination	◆		◆	◆	◆	◆	◆	◆	◆	◆	◆
Mini D Ribbon / Champ	◆		◆	◆	◆	◆	◆	◆	◆	◆	◆
Power	◆	◆	◆	◆	◆	◆	◆	◆	◆	◆	◆
SATA / SAS / Mini SATA	◆		◆	◆	◆	◆	◆	◆	◆	◆	◆
SCSI I, II, III	◆	◆					◆				◆



	3M	Amphenol	AVX - Elco	C&K	FCI	Molex	TE Connectivity
MEMORY CARD CONNECTORS							
CompactFlash™	◆	◆	◆		◆	◆	◆
DDR/DDR2/Mini DDR2			◆		◆	◆	◆
Express Card					◆	◆	◆
Full Size Card					◆		
Memory Stick / Duo						◆	◆
Micro SD					◆	◆	◆
Mini SD					◆	◆	◆
MMC			◆		◆	◆	◆
PC Card / CardBus		◆			◆	◆	◆
PCMCIA		◆			◆	◆	◆
SD (Secure Digital)		◆	◆		◆	◆	◆
Smart Card (SAM)				◆			◆
Smart Card (SIM)					◆	◆	◆
TransF						◆	◆
xD			◆			◆	◆

CompactFlash™ is a trademark of the Compact Flash Association

◆ Lead & Lead-free compliant parts available ◆ Lead-free only parts available

Interconnect

AUDIO	Amphenol Audio	Amphenol Nexus	Amphenol Tuchel	Spectrum Control (API Technologies)	TE Connectivity
1/4" Phone (T Series, M Series and Jacks)	◆				
1/4" Phone SwitchPlug	◆				
3.5mm PCB	◆				
AC PDN	◆				
AC Series XLR Cable	◆				
AC Series XLR Metal "Z" Chassis Mount	◆				
AC Series XLR PBC Chassis Mount	◆				
AC Series Dual 1/4" XLR	◆				
AC Series XLR Thermoplastic Chassis Mount	◆				
Accessories	◆	◆			
AX Series XLR Cable	◆				
BNC 75ohm Connectors	◆			◆	
C Type Combo 1/4" - XLR PCB	◆				
EP/AP Series High Power	◆	◆			
Multipin Series	◆	◆	◆	◆	
RCA Series	◆	◆			
SP High Current Loudspeaker	◆				
XLRnet Series Cable	◆				
XLRnet Series PCB / Chassis Mount	◆				

TERMINAL BLOCKS	Amphenol PCD	FCI	Molex - Beau	Phoenix Contact	Souriau	Spectrum Control (API Technologies)	TE Connectivity
Barrier Strips			◆			◆	◆
Europa							◆
Eurostyle - Fixed / Pluggable	◆	◆	◆	◆		◆	◆
2.54/3.50/3.81/5.0/5.08 mm	◆	◆	◆	◆			◆
Filtered						◆	
Interface Modules	◆			◆			
NEMA							◆
Phenolic			◆				◆
Push Button			◆				
Rail Mounted	◆			◆	◆		◆
Screw Terminal	◆	◆	◆	◆	◆	◆	◆
Spring Clamp	◆	◆	◆	◆			◆



TRANSPORTATION	3M	Amphenol	AVX - Elco	Delphi	Fargo	FCI	Harwin	KOSTAL	Molex	PKC Group	Phoenix Contact	Souriau	Spectrum Control (API Technologies)	TE Connectivity
APPLICATIONS														
Agricultural		◆	◆	◆	◆	◆	◆	◆	◆	◆	◆	◆	◆	◆
Automotive		◆	◆	◆	◆	◆	◆	◆	◆	◆	◆	◆	◆	◆
Commercial Vehicles		◆	◆	◆	◆	◆	◆	◆	◆	◆	◆	◆	◆	◆
Construction		◆	◆	◆	◆	◆	◆	◆	◆	◆	◆	◆	◆	◆
Marine		◆	◆	◆	◆	◆	◆	◆	◆	◆	◆	◆	◆	◆
Mass Transit		◆	◆		◆	◆	◆	◆	◆	◆	◆	◆	◆	◆
Recreational Vehicles		◆	◆	◆	◆	◆	◆	◆	◆	◆	◆	◆	◆	◆
INTERCONNECTS														
Backplane	◆	◆	◆		◆			◆						◆
Backshells	◆	◆	◆	◆		◆		◆				◆		◆
Board-to-Board	◆	◆	◆	◆		◆		◆		◆		◆		◆
Circular		◆		◆		◆		◆		◆		◆		◆
Contacts		◆		◆	◆	◆		◆		◆		◆		◆
Device-to-Board	◆	◆	◆			◆	◆	◆		◆				◆
Input / Output	◆	◆	◆			◆	◆	◆		◆		◆	◆	◆
Memory Card	◆	◆				◆		◆						◆
RF / Coax / Microwave		◆						◆						◆
Solderless Terminals	◆		◆			◆		◆		◆				◆
Speciality	◆	◆	◆	◆	◆	◆		◆	◆	◆	◆	◆	◆	◆
Terminal Blocks		◆				◆		◆	◆	◆				◆
Tooling	◆	◆	◆	◆		◆		◆	◆	◆	◆	◆	◆	◆
USB	◆	◆	◆							◆				◆
Wire & Cable	◆	◆						◆						◆
Wire Management	◆		◆			◆		◆	◆					◆
Wire-to-Board	◆	◆	◆	◆		◆	◆	◆	◆	◆	◆	◆	◆	◆
Wire-to-Wire	◆	◆	◆	◆		◆	◆	◆	◆	◆	◆	◆	◆	◆

◆ Lead-free only parts available

For more information contact:
FeedbackTTIAsia@ttiinc.com

Interconnect

WIRE & BOARD MANAGEMENT/ ACCESSORIES											
	3M	AirBorn	Amphenol	Amphenol PCD	AVX - Elco	FCI	Harwin	Molex	Phoenix Contact	Souriau	TE Connectivity
Backshells	◆	◆	◆	◆	◆	◆	◆	◆	◆	◆	◆
Cable Clips	◆	◆	◆	◆	◆	◆	◆	◆	◆	◆	◆
Cable Management	◆	◆	◆	◆	◆	◆	◆	◆	◆	◆	◆
Cable Marker Ties	◆	◆	◆	◆	◆	◆	◆	◆	◆	◆	◆
Cable Mounts	◆	◆	◆	◆	◆	◆	◆	◆	◆	◆	◆
Cable Spacers	◆	◆	◆	◆	◆	◆	◆	◆	◆	◆	◆
Cable Terminals	◆	◆	◆	◆	◆	◆	◆	◆	◆	◆	◆
Cable Ties	◆	◆	◆	◆	◆	◆	◆	◆	◆	◆	◆
Heat Shrink Products	◆	◆	◆	◆	◆	◆	◆	◆	◆	◆	◆
Jumper Links	◆	◆	◆	◆	◆	◆	◆	◆	◆	◆	◆
Labeling Systems	◆	◆	◆	◆	◆	◆	◆	◆	◆	◆	◆
Labels	◆	◆	◆	◆	◆	◆	◆	◆	◆	◆	◆
PCB Spacers	◆	◆	◆	◆	◆	◆	◆	◆	◆	◆	◆
PCB Terminals	◆	◆	◆	◆	◆	◆	◆	◆	◆	◆	◆
Printers/Software and Ribbons	◆	◆	◆	◆	◆	◆	◆	◆	◆	◆	◆
RFI Clips & Fingers	◆	◆	◆	◆	◆	◆	◆	◆	◆	◆	◆
Shorting Links	◆	◆	◆	◆	◆	◆	◆	◆	◆	◆	◆
Solderless Terminals	◆	◆	◆	◆	◆	◆	◆	◆	◆	◆	◆
Splices	◆	◆	◆	◆	◆	◆	◆	◆	◆	◆	◆
Stainless Steel Accessories	◆	◆	◆	◆	◆	◆	◆	◆	◆	◆	◆
Test Points	◆	◆	◆	◆	◆	◆	◆	◆	◆	◆	◆
Tooling	◆	◆	◆	◆	◆	◆	◆	◆	◆	◆	◆
Wire & Cable	◆	◆	◆	◆	◆	◆	◆	◆	◆	◆	◆
Wire Ducting	◆	◆	◆	◆	◆	◆	◆	◆	◆	◆	◆

RF/COAXIAL/MICROWAVE										
	3M	AirBorn	Amphenol Aero	Amphenol Connex	Amphenol RF	Amphenol SV Microwave	Molex	TE Connectivity		
1.0 / 2.3					◆	◆	◆	◆	◆	◆
1.6 / 5.6					◆	◆	◆	◆	◆	◆
7 / 16					◆	◆	◆	◆	◆	◆
BMA					◆	◆	◆	◆	◆	◆
BNC (50/75Ω)					◆	◆	◆	◆	◆	◆
BNC (Miniature)					◆	◆	◆	◆	◆	◆
B to B Blindmate/Compression					◆	◆	◆	◆	◆	◆
BSA					◆	◆	◆	◆	◆	◆
FAKRA					◆	◆	◆	◆	◆	◆
MCX / MMCX					◆	◆	◆	◆	◆	◆
MHV / SHV					◆	◆	◆	◆	◆	◆
Microwave Cable Assemblies					◆	◆	◆	◆	◆	◆
Precision ¹					◆	◆	◆	◆	◆	◆
QMA					◆	◆	◆	◆	◆	◆
Reverse Polarity ²					◆	◆	◆	◆	◆	◆
RF Cable Assemblies					◆	◆	◆	◆	◆	◆
Shielded Terminators					◆	◆	◆	◆	◆	◆
SMA					◆	◆	◆	◆	◆	◆
SMB (50/75Ω)					◆	◆	◆	◆	◆	◆
SMB (Miniature)					◆	◆	◆	◆	◆	◆
SMC					◆	◆	◆	◆	◆	◆
SMP					◆	◆	◆	◆	◆	◆
SMT					◆	◆	◆	◆	◆	◆
SSMA					◆	◆	◆	◆	◆	◆
TNC					◆	◆	◆	◆	◆	◆
Triax					◆	◆	◆	◆	◆	◆
Twinax		◆	◆	◆	◆	◆	◆	◆	◆	◆
Type F/G					◆	◆	◆	◆	◆	◆
Type N					◆	◆	◆	◆	◆	◆
UHF / MiniUHF					◆	◆	◆	◆	◆	◆

¹2.4 / 2.9 / 3.5 / 7mm
²BNC, MMCX, N, SMA, TNC

◆ Lead-free only parts available

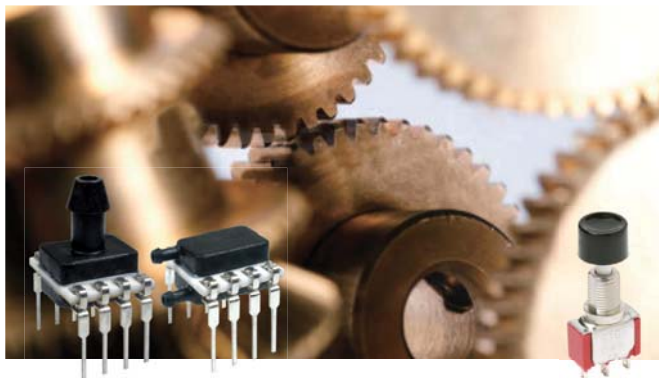
SPECIALTY																	
	3M	AirBorn	Amphenol	Amphenol Commercial	Amphenol PCD	AVX - Elco	Bourns	Delphi	FCI	Harwin	Molex	Omron	Panasonic	Phoenix Contact	Souriau	Spectrum Control (API Technologies)	TE Connectivity
Automotive			◆	◆	◆	◆	◆	◆	◆	◆	◆	◆	◆	◆	◆	◆	◆
Battery			◆	◆	◆	◆	◆	◆	◆	◆	◆	◆	◆	◆	◆	◆	◆
COTS		◆	◆	◆	◆	◆	◆	◆	◆	◆	◆	◆	◆	◆	◆	◆	◆
EMI Shielded	◆	◆	◆	◆	◆	◆	◆	◆	◆	◆	◆	◆	◆	◆	◆	◆	◆
Filtered			◆	◆	◆	◆	◆	◆	◆	◆	◆	◆	◆	◆	◆	◆	◆
Harsh Environment	◆	◆	◆	◆	◆	◆	◆	◆	◆	◆	◆	◆	◆	◆	◆	◆	◆
Hermetic		◆	◆	◆	◆	◆	◆	◆	◆	◆	◆	◆	◆	◆	◆	◆	◆
High Voltage		◆	◆	◆	◆	◆	◆	◆	◆	◆	◆	◆	◆	◆	◆	◆	◆
Industrial	◆	◆	◆	◆	◆	◆	◆	◆	◆	◆	◆	◆	◆	◆	◆	◆	◆
LED Connector			◆	◆	◆	◆	◆	◆	◆	◆	◆	◆	◆	◆	◆	◆	◆
M8/M12												◆	◆	◆	◆	◆	◆
Micro Miniature / Nano	◆	◆	◆	◆	◆	◆	◆	◆	◆	◆	◆	◆	◆	◆	◆	◆	◆

INPUT/OUTPUT																	
	3M	AirBorn	Amphenol	Amphenol Commercial	Amphenol PCD	AVX - Elco	FCI	Harwin	Molex	Omron	Panasonic	Phoenix Contact	Souriau	Spectrum Control (API Technologies)	TE Connectivity		
1394 & 1394b		◆	◆	◆	◆	◆	◆	◆	◆	◆	◆	◆	◆	◆	◆	◆	◆
Audio			◆	◆	◆	◆	◆	◆	◆	◆	◆	◆	◆	◆	◆	◆	◆
Camera Link / Mini Camera Link	◆	◆	◆	◆	◆	◆	◆	◆	◆	◆	◆	◆	◆	◆	◆	◆	◆
Circular	◆	◆	◆	◆	◆	◆	◆	◆	◆	◆	◆	◆	◆	◆	◆	◆	◆
Combo I/O	◆	◆	◆	◆	◆	◆	◆	◆	◆	◆	◆	◆	◆	◆	◆	◆	◆
Display Port			◆	◆	◆	◆	◆	◆	◆	◆	◆	◆	◆	◆	◆	◆	◆
D-Subminiature	◆	◆	◆	◆	◆	◆	◆	◆	◆	◆	◆	◆	◆	◆	◆	◆	◆
DVI			◆	◆	◆	◆	◆	◆	◆	◆	◆	◆	◆	◆	◆	◆	◆
Fiber Channel			◆	◆	◆	◆	◆	◆	◆	◆	◆	◆	◆	◆	◆	◆	◆
Fiber Optic	◆	◆	◆	◆	◆	◆	◆	◆	◆	◆	◆	◆	◆	◆	◆	◆	◆
Filtered I/O	◆	◆	◆	◆	◆	◆	◆	◆	◆	◆	◆	◆	◆	◆	◆	◆	◆
HDMI / Micro HDMI			◆	◆	◆	◆	◆	◆	◆	◆	◆	◆	◆	◆	◆	◆	◆
IPass			◆	◆	◆	◆	◆	◆	◆	◆	◆	◆	◆	◆	◆	◆	◆
InfiniBand®			◆	◆	◆	◆	◆	◆	◆	◆	◆	◆	◆	◆	◆	◆	◆
M12 / M12D / M8											◆	◆	◆	◆	◆	◆	◆
Micro D		◆	◆	◆	◆	◆	◆	◆	◆	◆	◆	◆	◆	◆	◆	◆	◆
Mini DIN / Circular DIN			◆	◆	◆	◆	◆	◆	◆	◆	◆	◆	◆	◆	◆	◆	◆
Mini D-Subminiature																◆	◆
Mobile Systems											◆	◆	◆	◆	◆	◆	◆
Modular Plugs & Jacks	◆	◆	◆	◆	◆	◆	◆	◆	◆	◆	◆	◆	◆	◆	◆	◆	◆
PCI Express											◆	◆	◆	◆	◆	◆	◆
Power	◆	◆	◆	◆	◆	◆	◆	◆	◆	◆	◆	◆	◆	◆	◆	◆	◆
Push / Pull											◆	◆	◆	◆	◆	◆	◆
Rectangular	◆	◆	◆	◆	◆	◆	◆	◆	◆	◆	◆	◆	◆	◆	◆	◆	◆
RF / Coax / Microwave	◆	◆	◆	◆	◆	◆	◆	◆	◆	◆	◆	◆	◆	◆	◆	◆	◆
RJ / Industrial Ethernet											◆	◆	◆	◆	◆	◆	◆
SATA / SAS / Mini SATA	◆	◆	◆	◆	◆	◆	◆	◆	◆	◆	◆	◆	◆	◆	◆	◆	◆
SCSI	◆	◆	◆	◆	◆	◆	◆	◆	◆	◆	◆	◆	◆	◆	◆	◆	◆
SFP / XFP											◆	◆	◆	◆	◆	◆	◆
TDP											◆	◆	◆	◆	◆	◆	◆
USB / Mini USB / USB OTG			◆	◆	◆	◆	◆	◆	◆	◆	◆	◆	◆	◆	◆	◆	◆

InfiniBand® is a trademark of the InfiniBand Trade Association

Electromechanical

SENSORS													
	AVX	Bourns	Honeywell	KOA	Littelfuse, Hamlin	Murata	Omron Automation & Safety	Omron Components	Panasonic	ROHM Semiconductor	TDK / EPOS	TT Electronics	VisRay
● On-board													
○ Off-board													
◆ Both On and Off-board													
MOTION/POSITION/SPEED													
Accelerometer			○		●	●		●	●				
Encoder/Rotary		○	◆		○	◆		●			●		
Inclinometer/Tilt					◆		●					●	
Inertial Measurement Unit			○			●							
Liquid Level			○		○		○			●			
Motion (Human Presense)					●		◆	◆					
Position, Displacement		○	○				●					○	
Proximity		○			○	○	○		◆		○	○	
Shock & Vibration			○		●		◆	◆					
Speed (Hall-Effect)		◆	◆		○			◆	◆	○	◆		
Ultrasonic			○		◆	○							
OPTICAL													
Ambient Light					●			●	●			●	
Fiber Optic			○			○							
Infrared			◆		●			●			●	●	
Photodiodes			●								●	●	
Photoelectric			◆								◆	◆	
PRESSURE/FORCE/FLOW													
Barometer					●								
Flow			◆			◆	◆					○	
Force			●										
Load Cell/Load Pin			○										
Pressure			◆		●		●	◆		●	◆		
THERMAL/HUMIDITY													
Air/Gas/Fluid Property			◆							●			
Combination MEMS/SMD			●				●						
Heaters			◆										
Humidity			●							●			
NTC Thermistor	●		●	●	●			●	◆		◆	◆	
Probes & Assemblies			○							○	○	○	
PTC Thermistor			●		●			◆		●	◆	◆	
RTD			◆			◆						●	
Thermocouples					○						○		
Thermophile						●							
OTHER													
Auto/Vehicle		●	◆		●					●	●		
Capacitive Touch					●								
Current			◆		●					○			



POWER SUPPLIES					
	Murata Power Solutions	Omron Industrial	Panasonic	Phoenix Contact	TDK
AC/DC Power Supplies	◆	◆		◆	
DC/DC Power Converters	◆	◆	◆		
DC/AC Power Inverters		◆			◆

◆ Lead-free only parts available

RELAYS, CIRCUIT BREAKERS & SWITCHES									
	Bourns	C&K Components	Hamlin (Littelfuse)	Honeywell	KEMET / NEC TOKIN	Omron	Panasonic	Phoenix Contact	TE Connectivity
RELAYS									
Automotive						◆	◆		◆
Communication						◆	◆		◆
Compressor									◆
Contactors									◆
Crystal Can									◆
Definite Purpose Contactors									◆
DIN Rail Mounted						◆	◆	◆	◆
Dry Reed			◆						◆
Forcibly-Guided Contact						◆			◆
General Purpose						◆	◆	◆	◆
High Voltage Switching						◆	◆	◆	◆
Industrial DC & AC						◆	◆	◆	◆
Input/Output Modules						◆			◆
Low Signal PCB					◆				◆
Magnetic Latching						◆	◆		◆
Military									◆
Miniature PCB									◆
MOSFET						◆	◆		◆
Panel/Plug-In							◆	◆	◆
Phase Sequencing									◆
Power						◆	◆	◆	◆
Power Controllers									◆
Power Distribution Panels									◆
Power PCB						◆	◆		◆
Programmable Time Delay						◆			◆
Protective						◆	◆		◆
Reed			◆						◆
Reverse Power									◆
RF									◆
Rotary									◆
Safety						◆	◆		◆
Signal						◆	◆	◆	◆
Sockets						◆	◆	◆	◆
Solid State						◆	◆	◆	◆
Time Delay						◆			◆
Timers						◆			◆
TO-5									◆
Traffic Control									◆
CIRCUIT BREAKERS									
Electronic Circuit Breaker									◆
Hydraulic / Magnetic Circuit Breakers									◆
Thermal Circuit Breakers									◆
SWITCHES									
Contact Block									◆
Detector		◆							◆
DIP	◆	◆							◆
Encoder			◆						◆
Fader									◆
Hour Meter			◆						◆
Industrial		◆	◆			◆	◆		◆
Keylock									◆
Keypad		◆	◆						◆
Knobs									◆
Limit		◆	◆						◆
Membrane									◆
Navigation		◆							◆
Optical			◆			◆	◆		◆
Paddle		◆	◆						◆
Panel Mount		◆	◆				◆		◆
Power Rocker		◆							◆
Pressure Switch			◆						◆
Pushbutton		◆	◆			◆	◆		◆
Pushwheel		◆							◆
Reed			◆						◆
Rocker		◆							◆
Rotary	◆		◆						◆
Safety		◆	◆			◆	◆		◆
Selector		◆							◆
Slide		◆							◆
Snap Action		◆	◆			◆	◆		◆
Special Purpose		◆	◆			◆	◆		◆
Switchlock		◆							◆
Surface Mount		◆							◆
Tactile		◆	◆						◆
Thumbwheel		◆							◆
Toggle			◆						◆
Vacuum			◆						◆



There's a TTI location near you.



The World's Leading Distributor
of Interconnect, Passive, Electromechanical
and Discrete Components



TTI ASIA Line Card

CHINA

Beijing

Phone +86 10 6566 4748
Fax +86 10 6566 4238

Chengdu

Phone +86 21 5174 2088
Fax +86 21 5153 1383

Dalian

Phone +86 10 6566 4748
Fax +86 10 6566 4238

Dongguan

Phone +86 769 8275 6428
Fax +86 769 8275 9342

Hangzhou

Phone +86 21 5174 2088
Fax +86 21 5153 1383

Liuzhou

Phone +86 769 8275 6428
Fax +86 769 8275 9342

Shanghai

Phone +86 21 5174 2088
Fax +86 21 5153 1383

Shenzhen

Phone +86 755 2269 1988
Fax +86 755 8386 5272

Suzhou

Phone +86 512 8957 0486
Fax +86 512 8885 9620

Tianjin

Phone +86 10 6566 4748
Fax +86 10 6566 4238

Wuhan

Phone +86 21 5174 2088
Fax +86 21 5153 1383

Xiamen

Phone +86 21 5174 2088
Fax +86 21 5153 1383

Xi'an

Phone +86 21 5174 2088
Fax +86 21 5153 1383

Hong Kong

Phone +852 3658 4700
Fax +852 2628 0966

Kaohsiung, Taiwan

Phone +886 2 2796 8305
Fax +886 2 2796 8315

Taipei, Taiwan

Phone +886 2 2796 8305
Fax +886 2 2796 8315

SOUTH ASIA

Australia / New Zealand

Phone +65 6788 9200
Fax +65 6788 3002

Indonesia

Phone +65 6788 9200
Fax +65 6788 3002

Kuala Lumpur, Malaysia

Phone +60 4 659 2011
Fax +60 4 659 3011

Penang, Malaysia

Phone +60 4 659 2011
Fax +60 4 659 3011

Philippines

Phone +63 2654 5599
Fax +63 2234 2187

Singapore

Phone +65 6788 9200
Fax +65 6788 3002

Thailand

Phone +662 694 2277
Fax +662 694 2276

Hanoi, Vietnam

Phone +65 6788 9200
Fax +65 6788 3002

Ho Chi Minh, Vietnam

Phone +65 6788 9200
Fax +65 6788 3002

OTHER LOCATIONS

Bangalore, India

Phone +91 80 4147 7191
Fax +91 80 4147 7192

Hyderabad, India

Phone +91 80 4147 7191
Fax +91 80 4147 7192

New Delhi, India

Phone +91 80 4147 7191
Fax +91 80 4147 7192

Pune, India

Phone +91 80 4147 7191
Fax +91 80 4147 7192

Korea

Phone +82 2 3156 8763
Fax +82 2 3156 8766

There's a TTI location near you.

Global Headquarter

www.ttiinc.com

TTI, Inc.
2441 Northeast Parkway
Fort Worth, Texas
76106-1816, USA
Phone +001 817 740 9000
Fax +001 817 740 9898

Asia Headquarter

www.ttiasia.com

TTI Electronics Asia Pte. Ltd
3 Changi North Street 2
Logistech Building #04-01
Singapore 498827
Phone +65 6788 9200
Fax +65 6788 9300

Europe Headquarter

www.ttieurope.com

TTI, Inc.
Ganghoferstr. 34
82216 Maisach-Gernlinden
Germany
Phone +49 8142 6680-0
Fax +49 8142 6680-490



Contact TTI: FeedbackTTIAsia@ttiinc.com
China Toll Free Number: **400-844-4868**



Supplier Authorized
Distributor

LC EN 0217 ASIA
ISO 9001:2000
Registered