



TTI ASIA Line Card

www.tti.com

Alternative Energy • Medical • Communications • Transportation • Industrial



The Global Specialist in Electronic Component Distribution

Why TTI?

Founded in 1971, TTI steadily has grown to become the world's largest specialist distributor for Passive, Discrete, Connector and Electromechanical components. TTI ASIA is head-quartered in Singapore, with three dedicated ISO 9001:2008 certified warehouses located in Hong Kong, Shanghai and Singapore. TTI is well positioned to support Greater China and South Asia, with over 400 staff covering 24 locations in 12 countries.

Product Knowledgeable Experts

TTI has a team of specialists with more product experience and knowledge than any other distributor. All TTI employees participate in company-wide training programs, plus every one of our sales branches has a team of product managers on-site to provide the extra support that customers need. Through the years these exceptional specialists have become, and remained, the most knowledgeable in the electronic component industry.

Broader and Deeper Inventories

TTI maintains extensive inventories by stocking more than 500,000 parts with over 80% available for immediate delivery. That's more interconnect, passive, electro-mechanical, and discrete parts than from any other source. We remain committed to breadth and depth of inventory, ensuring availability of C and D class parts as well as commodity parts.

Leading Edge Technology Products

The manufacturers TTI partners with, are the companies that lead the industry in new component technologies. For customers, this means that TTI enlists the help of the manufacturers who can help solve any design challenge. Our product groups also focus on new product introductions to ensure we have the very latest and most technologically-advanced products readily available from stock.

Value Added Logistic Services

From technical application advice to customized logistical solutions; TTI can add value throughout the supply chain by reducing acquisition costs, improving material flow through forecast analysis, provide safety stock and reduce receipt handling through consolidated shipments. These are just some areas that TTI can review with your company to streamline your internal supply chain and help reduce hidden material costs.

Global Distribution Centers

TTI has more than 1.3 million square feet of automated warehousing in North America, Europe, and Asia. All are linked into a global warehouse management system that provides superior customer service and overall business efficiencies. Wherever you are in the world, TTI can support you.

Quality and Reliability

TTI has a passion for excellence, and after 40 years experience our on-time delivery and quality levels are the best in class. TTI implemented Total Quality Management in 1989 and have been ISO registered since 1993, we were the first distributor to have all of our global warehouse locations ISO registered and have since upgraded to ISO9001:2008. TTI has one global documentation system that ensures that every TTI branch and warehouse in the world follow the same processes. Year after year, customers rate our quality and management practices to be among the very best in the industry. This is especially important when the products are the typical high mix, low value parts on which we have built our reputation.

THE SPECIALIST

Authorized Distributor of These Manufacturers and Their Brands



**When it comes to IP&E and discrete components,
TTI is your go-to resource with the broadest and deepest inventory,
and a reputation for quality and on-time delivery second to none.**

3M INTERCONNECT

SOLUTIONS

ABRACON

AIRBORN INTERCONNECTS

AMPHENOL

- AFCI
- Amphenol Aerospace
- Amphenol Audio
- Amphenol Canada
- Amphenol Commercial Products
- Amphenol Connex
- Amphenol Fiber Optics
- Amphenol Industrial
- Amphenol Matrix
- Amphenol Nexus
- Amphenol Pcd
- Amphenol RF
- Amphenol Sensors
- Amphenol Sine
- Amphenol Spectra Strip
- Amphenol SV Microwave
- Amphenol TCS
- Amphenol Tuchel

API DELEVAN

APTIV

AVX

- Elco
- TS&C

BOURNS

- J.W. Miller

C&K

CORNELL DUBILIER (CDE)

- Illinois Capacitor

EATON

- Bussmann
- Coiltronics
- PowerStor

HONEYWELL

ITT CANNON

KEMET

- Arcotronics
- Evox Rifa
- Forest Electric (FELCO)
- NEC TOKIN

KNOWLES

- Dielectric Labs
- Novacap
- Syfer

KOA

KYOCERA

LELON

LITTELFUSE

- Concord Semiconductor
- Hamlin
- Littelfuse Automotive
- Teccor

MOLEX

- Brad
- Beau
- FTC
- GWconnect
- Temp-Flex
- Woodhead

MURATA

- Murata Power Solutions (MPS)
- RF Monolithics
- TOKO

NICHICON

OHMITE

- Arcol

OMRON ELECTRONIC COMPONENTS

PANASONIC

- Aromat
- Sanyo

PHOENIX CONTACT

PRECI-DIP

PULSE

ROHM SEMICONDUCTOR

SENSATA TECHNOLOGIES (INDUSTRIAL SOLUTIONS)

SMITHS INTERCONNECT

- Hypertac
- IDI
- Sabritec

SOURIAU

SPECTRUM CONTROL

TDK

- EPCOS
- RF360

TE CONNECTIVITY

- AGASTAT
- ALCOSWITCH
- AMP

• AMP NETCONNECT

- AUGAT
- AXICOM
- CII Technologies
- Chip Coolers
- Corcom
- DEUTSCH
- ELCON
- HARTMAN
- HTS
- KILOVAC
- MADISON CABLE
- Measurement Specialties
- MICRODOT
- Molded Interconnect
- NANONICS
- OEG
- Potter & Brumfield
- Products Unlimited
- Raychem
- SCHRACK

TT ELECTRONICS

- BI Technologies
- IRC
- Optek
- Semelab
- Welwyn

UNITED CHEMI-CON

VISHAY

- Angstrohm
- BCcomponents
- Beyschlag
- Cera-Mite
- Dale
- Draloric
- Electro-Films
- Huntington/Milwaukee
- Roederstein
- Semiconductors
- Sfernice
- Siliconix
- Spectrol
- Sprague
- Tansitor
- Techno
- Thin Film
- Vitramon

VISHAY PRECISION GROUP

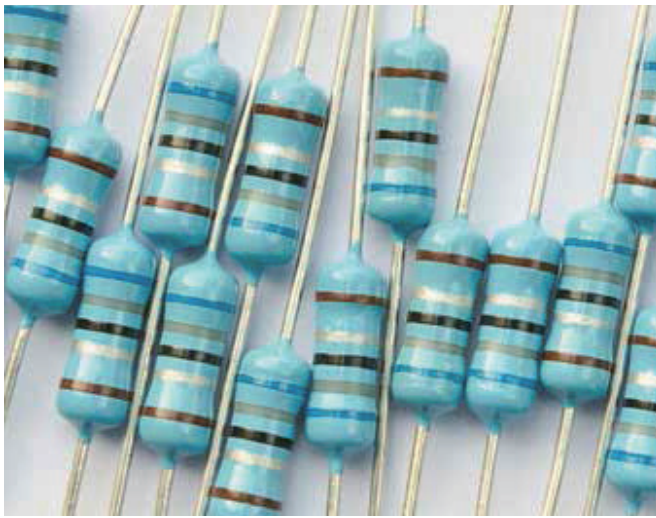
- Foil Resistors

WIMA

YAGEO

Resistors

FILM																			
	Bourns	KOA	OHMITE	Panasonic	Smiths Interconnect	TE Connectivity	TT Electronics	IRC	Welwyn	Vishay	Angstrom	BCcomponents	Dale	Electro-Films	Sfernice	Techno	Thin Film	Vishay Precision Group	Yageo
METAL FILM																			
Discrete Chip		●	◆	●	◆	●	◆	●	◆			●	◆	●	◆	●	◆	●	◆
Flame Proof		●	◆		◆	●	◆	●	◆			●	◆	●	◆	●	◆	●	◆
Fusible	◆	●	◆		◆	●	◆	●	◆			●	◆	●	◆	●	◆	●	◆
High Temp	◆	●	◆	●	◆	●	◆	●	◆			●	◆	●	◆	●	◆	●	◆
High Voltage		●	◆	●	◆	●	◆	●	◆			●	◆	●	◆	●	◆	●	◆
Matched Sets			●			◆	●	◆	●			●	◆	●	◆	●	◆	●	◆
Melf /Cylindrical		◆			◆	●	◆	●	◆			●	◆	●	◆	●	◆	●	◆
Metal Film	◆	●	◆	●	◆	●	◆	●	◆			●	◆	●	◆	●	◆	●	◆
Metal Glaze						●	◆	●	◆			●	◆	●	◆	●	◆	●	◆
Metal Oxide		●	◆	●	◆	●	◆	●	◆			●	◆	●	◆	●	◆	●	◆
Precision	◆	●	◆	●	◆	●	◆	●	◆			●	◆	●	◆	●	◆	●	◆
Thick Film Chip	◆	●	◆	●	◆	●	◆	●	◆			●	◆	●	◆	●	◆	●	◆
Thin Film Chip	◆	●	◆	●	◆	●	◆	●	◆			●	◆	●	◆	●	◆	●	◆
Trimmable					◆	●	◆	●	◆			●	◆	●	◆	●	◆	●	◆
Voltage Divider			◆		◆	●	◆	●	◆			●	◆	●	◆	●	◆	●	◆
Terminations				◆								●	◆	●	◆	●	◆	●	◆



NETWORK																			
	Bourns	KOA	OHMITE	Panasonic	Smiths Interconnect	TE Connectivity	TT Electronics	IRC	Welwyn	Vishay	Dale	Electro-Films	Techno	Thin Film	Vishay Precision Group	Yageo			
Array	◆	●	◆	●	◆	●	◆	●	◆	●	◆	●	◆	●	◆	●	◆	●	◆
Conformal Coated	◆	●	◆	●	◆	●	◆	●	◆	●	◆	●	◆	●	◆	●	◆	●	◆
Custom	◆	●	◆	●	◆	●	◆	●	◆	●	◆	●	◆	●	◆	●	◆	●	◆
Integrated Passive	◆	●	◆	●	◆	●	◆	●	◆	●	◆	●	◆	●	◆	●	◆	●	◆
Ladder	◆	●	◆	●	◆	●	◆	●	◆	●	◆	●	◆	●	◆	●	◆	●	◆
Line Protection	◆	●	◆	●	◆	●	◆	●	◆	●	◆	●	◆	●	◆	●	◆	●	◆
Molded	◆	●	◆	●	◆	●	◆	●	◆	●	◆	●	◆	●	◆	●	◆	●	◆
Resistor / Capacitor	◆	●	◆	●	◆	●	◆	●	◆	●	◆	●	◆	●	◆	●	◆	●	◆
SMT	◆	●	◆	●	◆	●	◆	●	◆	●	◆	●	◆	●	◆	●	◆	●	◆
Surge	◆	●	◆	●	◆	●	◆	●	◆	●	◆	●	◆	●	◆	●	◆	●	◆
Thick Film DIP	◆	●	◆	●	◆	●	◆	●	◆	●	◆	●	◆	●	◆	●	◆	●	◆
Thick Film SIP	◆	●	◆	●	◆	●	◆	●	◆	●	◆	●	◆	●	◆	●	◆	●	◆
Thin Film DIP	◆	●	◆	●	◆	●	◆	●	◆	●	◆	●	◆	●	◆	●	◆	●	◆
Thin Film SIP	◆	●	◆	●	◆	●	◆	●	◆	●	◆	●	◆	●	◆	●	◆	●	◆
Fixed Attenuator					◆														
Temp Variable Btn					◆														

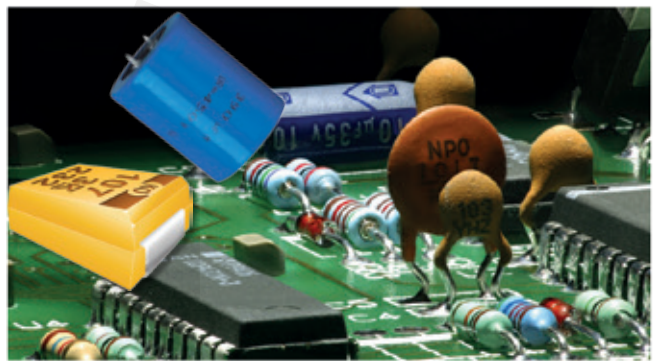
POTENTIOMETERS TRIMMERS																			
	BI Technologies (TT Electronics)	Bourns	Honeywell	Murata	OHMITE	Panasonic	TE Connectivity	Vishay	BCcomponents	Dale	Sfernice	Spectral	Vishay Precision Group	Yageo					
TRIMMING POTENTIOMETERS																			
Adjustment Tools		◆		◆				◆						◆					
Carbon	●	●		◆		◆	◆						◆						
Cermet	●	●	◆			◆	◆	●	◆			◆	◆						
Counters	●	◆						●	◆			◆	◆						
Multi-Turn	●	●		◆			◆	◆	●	◆		◆	◆						
Open Frame	●	●		◆			◆	◆	●	◆		◆	◆						
Sealed Frame	●	●		◆			◆	◆	●	◆		◆	◆						
Single-Turn	●	●		◆			◆	◆	●	◆		◆	◆						
Wirewound		▲			●		◆	◆	●	◆		◆	◆						
PRECISION PANEL CONTROL																			
Carbon		◆							◆					◆					
Cermet	◆	◆	◆						◆			◆	◆	◆					
Conductive Plastic	◆	◆	◆						◆			◆	◆	◆					
Dials / Knobs	●	◆							◆			◆	◆	◆					
Knobs	◆	◆			◆				◆			◆	◆	◆					
Hybrid	◆	◆							◆			◆	◆	◆					
Linear	◆	◆		●					◆			◆	◆	◆					
Metal Foil									◆				◆	◆					
Modular	◆								◆			◆	◆	◆					
Motor Pot	◆								◆			◆	◆	◆					
Multi-Turn	◆	◆			◆				◆			◆	◆	◆					
Non-Linear	◆								◆			◆	◆	◆					
Open Frame Slide		◆							◆			◆	◆	◆					
Rheostat					◆				◆			◆	◆	◆					
Rotary	◆	◆	◆		◆				◆			◆	◆	◆					
Sealed Frame	◆	◆		●					◆			◆	◆	◆					
Single-Turn	◆	◆		◆					◆			◆	◆	◆					
Wirewound	◆	◆	◆	◆					◆			◆	◆	◆					
SENSOR/ENCODER																			
Attenuator									◆	◆		●							
Encoders	◆	◆	●					◆	◆	◆									
Linear Motion		◆							◆			◆					◆	●	
Rotary	◆	●	◆		◆				◆			◆					◆	●	

POWER WIREWOUND CARBON & FOIL																			
	Bourns	KOA	OHMITE	Panasonic	TE Connectivity	TT Electronics	IRC	Welwyn	Vishay	Dale	Huntington / Milwaukee	Sfernice	Thin Film	Vishay Precision Group	Yageo				
POWER/WIREWOUND																			
Brackets / Hardware			●	◆					●	◆	◆				◆				
Ceramic Composition			●	◆					●	◆	◆				◆				
Commercial		●	◆		●	◆	●	◆	●	◆	◆				◆				
Current Sense / Low Resistance	◆	●	◆	◆	●	◆	●	◆	●	◆	◆				◆				
Grid			◆																
Industrial		◆	●		◆	●	◆	●	◆	◆	◆				◆				
Precision		●	◆		◆	●	◆	●	◆	◆	◆				◆				
Rheostat		●	◆		◆	●	◆	●	◆	◆	◆				◆				
Special Purpose		◆	●		◆	●	◆	●	◆	◆	◆				◆				
Tubular		◆	●		◆	●	◆	●	◆	◆	◆				◆				
Vitreous Enamel			●		◆	●	◆	●	◆	◆	◆				◆				
CARBON																			
Carbon Composition		●	◆		◆	●	◆	●	◆	◆	◆				◆				
Carbon Film		●	◆		◆	●	◆	●	◆	◆	◆				◆				
FOIL																			
Bulk Metal Foil																			●

● Lead & Lead-free compliant parts available ◆ Lead-free only parts available ▲ Lead-only compliant parts available

Capacitors

ALUMINUM	AVX	Cornell Dubilier/ Illinois Capacitor	EPCOS (TDK)	KEMET	Murata	Nichicon	Panasonic	PowerStor (Eaton)	Surge / Lelon	UCC	Wishay - BC Components
	AC Motor Start	◆	◆	◆	◆	◆	◆	◆	◆	◆	◆
Axial Electrolytic	◆	●	●	◆	◆	◆	◆	◆	◆	◆	●
EDLC / Supercapacitor	◆	◆	◆	◆	◆	◆	◆	◆	◆	◆	◆
FlatPack Electrolytic	◆	▲	◆	◆	◆	◆	◆	◆	◆	◆	◆
Polymer	◆	◆	◆	◆	◆	◆	◆	◆	◆	◆	◆
Radial Miniature	◆	●	●	◆	◆	◆	◆	◆	◆	◆	●
Screw Terminal	◆	◆	◆	◆	◆	◆	◆	◆	◆	◆	◆
Snap-In	◆	◆	◆	◆	◆	◆	◆	◆	◆	◆	◆
Surface Mount	◆	◆	◆	◆	◆	◆	◆	◆	◆	◆	◆



FILM & MICA	AVX	Cornell Dubilier	KEMET	Nichicon	Panasonic	Spectrum Control (API Technologies)	Surge / Lelon	TDK - EPCOS	United Chemi-Con	Vishay	BCComponents	Draloric	Reederstein	WIMA
	FILM													
Motor Run	◆	◆	◆	◆	◆	◆	◆	◆	◆	◆	◆	◆	◆	◆
Polyester	◆	●	◆	◆	◆	◆	◆	◆	◆	◆	◆	◆	◆	◆
Polypropylene	◆	●	◆	◆	◆	◆	◆	◆	◆	◆	◆	◆	◆	◆
Power Film	◆	●	◆	◆	◆	◆	◆	◆	◆	◆	◆	◆	◆	◆
Snubber	◆	●	◆	◆	◆	◆	◆	◆	◆	◆	◆	◆	◆	◆
Suppression X-Y (Safety Cap)	◆	◆	◆	◆	◆	◆	◆	◆	◆	◆	◆	◆	◆	◆
Surface Mount	◆	●	◆	◆	◆	◆	◆	◆	◆	◆	◆	◆	◆	◆
MICA														
Metal Clad	◆	●	◆	◆	◆	◆	◆	◆	◆	◆	◆	◆	◆	◆
Mica	◆	●	◆	◆	◆	◆	◆	◆	◆	◆	◆	◆	◆	◆
Surface Mount	◆	●	◆	◆	◆	◆	◆	◆	◆	◆	◆	◆	◆	◆

CERAMIC	AVX	Cornell Dubilier	KEMET	Murata	Spectrum Control (API Technologies)	Syfer	TDK - EPCOS	Vishay	BCComponents	Ceramite	Vitramon	United Chemi-Con	Yageo
	Arrays	●	◆	◆	◆	◆	◆	◆	◆	◆	◆	◆	◆
Dip 2-Pin	◆	◆	◆	◆	◆	◆	◆	◆	◆	◆	◆	◆	◆
Disc	◆	◆	◆	◆	◆	◆	◆	◆	◆	◆	◆	◆	◆
High Cap	●	●	◆	◆	◆	◆	◆	◆	◆	◆	◆	◆	◆
High Q	◆	◆	◆	◆	◆	◆	◆	◆	◆	◆	◆	◆	◆
High Temperature	●	●	◆	◆	◆	◆	◆	◆	◆	◆	◆	◆	◆
High Voltage	●	●	◆	◆	◆	◆	◆	◆	◆	◆	◆	◆	◆
Low Inductance	◆	◆	◆	◆	◆	◆	◆	◆	◆	◆	◆	◆	◆
Multi-Layer	●	●	◆	◆	◆	◆	◆	◆	◆	◆	◆	◆	◆
RF / Microwave	◆	◆	◆	◆	◆	◆	◆	◆	◆	◆	◆	◆	◆
Safety	◆	◆	◆	◆	◆	◆	◆	◆	◆	◆	◆	◆	◆
Single Layer	●	◆	◆	◆	◆	◆	◆	◆	◆	◆	◆	◆	◆
Switch Mode	◆	◆	◆	◆	◆	◆	◆	◆	◆	◆	◆	◆	◆
Tip and Ring	◆	◆	◆	◆	◆	◆	◆	◆	◆	◆	◆	◆	◆
Trimmer	◆	◆	◆	◆	◆	◆	◆	◆	◆	◆	◆	◆	◆



TANTALUM	AVX	KEMET	Panasonic	Vishay
	Conformal Coated Chip	◆	◆	◆
Dipped Radial	●	●	◆	●
Fail Safe / Fused Chip	●	●	◆	●
Hermetic Through Hole	●	●	◆	●
High Temperature Chip	●	●	◆	●
Low ESR Chip	●	●	◆	●
Low Profile Chip	●	●	◆	●
Micro-Chip	◆	◆	◆	◆
Molded Chip	●	●	◆	●
Molded Through Hole	◆	◆	◆	◆
Niobium Chip	◆	◆	◆	◆
Polymer Chip	●	●	◆	●
Solid Metal Case Through Hole	◆	◆	◆	◆
Supertan	◆	◆	◆	◆
Wet Through Hole	◆	◆	◆	◆

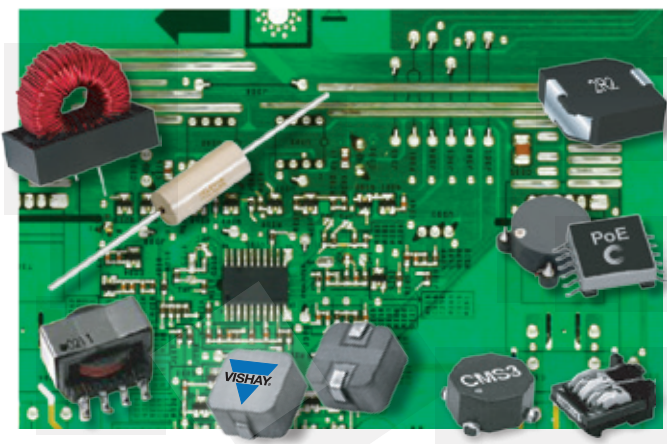
● Lead & Lead-free compliant parts available ◆ Lead-free only parts available ▲ Lead-only compliant parts available

Circuit Protection & Electromagnetic Components

PROTECTION DEVICES	AVX	Bourns	Bussmann (Eaton)	EPCOS (TDK)	KOA	KEMET/NEC TOKIN	Littelfuse - Teccor	Murata	Panasonic	TE Connectivity's Raychem	ROHM Semiconductors	TDK	United Chemi-Con	Vishay	BC Components	Dale	Semiconductors
	OVER CURRENT																
Automotive (Blade) Fuses		◆				◆											
Axial Fuses		◆				◆											
Cartridge Fuses			◆			◆											
NTC Thermistors	●		◆	◆		◆	◆	◆				◆		●	◆	●	
Power (Electrical) Fuses			◆			◆											
PTC Thermistors		◆	◆	◆		◆	◆					◆		●	◆	●	
Radial Leded Resettable Fuses (PTC)		◆	◆			◆				◆							
Radial Subminiature Fuses			◆			◆											
Surface Mount Resettable Fuses (PTC)		◆	◆			◆				◆				●	◆	●	
Surface Mount (125V+) Fuses		◆	●		◆	●				◆							
Thermal Cutoffs (TCO)						◆				◆							
Thin Film (Chip) Fuses	●	◆	◆			◆	◆	◆						◆	◆		
OVER VOLTAGE																	
Gas Discharge Tube (GDT)		●	◆			◆				◆		◆					
Line Protection Networks		◆															
Polymer ESD Suppression			◆			◆				◆							
Protection Thyristors		◆				◆											
Surface Mount Varistors (MLV)	◆	◆	◆	◆	◆	◆				◆		◆	◆	◆	◆		
Thermal MOV						◆							◆	◆			
Through-Hole Varistors (MOV)		◆	◆	◆		◆				◆		◆	◆	◆	◆		
TVS Diodes	◆	◆	◆			◆				◆		◆	◆	◆	◆		◆
TVS Diodes Arrays	◆					◆				◆		◆	◆	◆	◆		◆

Filters

EMI/RFI & RF	AVX	KEMET / NEC TOKIN	Murata	Panasonic	Pulse	Smiths Interconnect	Spectrum Control (API Technologies)	Syfer	TDK - EPCOS	TE Connectivity's Corcom	Yageo
	EMI / RFI Filters	●	●	●	●	●	◆	●	●	●	◆
Feed-Thru Filters			●				●	●	●	◆	
Noise Suppression Sheets		◆								◆	
RF / Microwave Filters	●		●	●	●	◆	●	●	●		●
RF Module			●	●					●		
SAW Filters	◆		◆	◆			●		◆		
Surface Mount Filters	●	●	●	●	◆	●	●	●	●		●



● Lead & Lead-free compliant parts available ◆ Lead-free only parts available

Magnetics

FERRITES INDUCTORS TRANSFORMERS	API Delevan	AVX	BI Technologies (TT Electronics)	Bourns - JW Miller	Coiltronics (Eaton)	KEMET / NEC TOKIN	KOA	Littelfuse - Teccor	Murata	Panasonic	Pulse	Spectrum Control (API Technologies)	TDK - EPCOS	Vishay - Dale	Yageo
	Air Coil Inductors	●	◆										●		
Common Mode Chokes	●	◆	◆	◆	◆				◆	◆		●	◆	◆	◆
Custom Inductors	●			●					●		◆	●	●	●	
Ferrite Beads	◆		◆	◆	◆	◆	◆		◆	◆			◆	◆	◆
Ferrite Cores/Clamp Filters	◆		◆						◆			●	◆	◆	◆
High Current Inductors	◆	◆	●	◆	◆	◆			◆	◆		●	●	●	◆
Leaded Inductors	●		◆	◆	◆							●	●	●	◆
Military Inductors	●											●	●	●	◆
Multilayer Inductors		◆	◆	◆	◆	◆	◆		◆	◆		●	●	●	◆
Power Inductors	●	◆	●	◆	◆	◆			◆	◆		●	●	●	◆
RF Inductors	●	◆	◆	◆	◆	◆	◆		◆	◆		●	●	●	◆
Thin Film Inductors		◆	◆											◆	
Torrid Inductors	◆		◆	◆	◆				◆	◆		●	●	◆	◆
Transformers	●		◆	◆	◆	◆			◆	◆		●	●	●	◆
Wirewound/Coil Inductors	●	◆	◆	◆	◆	◆			◆	◆		●	●	●	◆

Piezo

SOUND DEVICES	AVX	Murata	Panasonic	TDK
	Buzzer	●	●	●
Microphone				
Receiver			●	
Ringer		●	●	
Sensor				●
Sounder		●	●	
Speaker		●	●	

Thermal Management

Thermal Management	Ohmite
	Extruded Heatsinks
Liquid Coldplates	●

Timing Devices

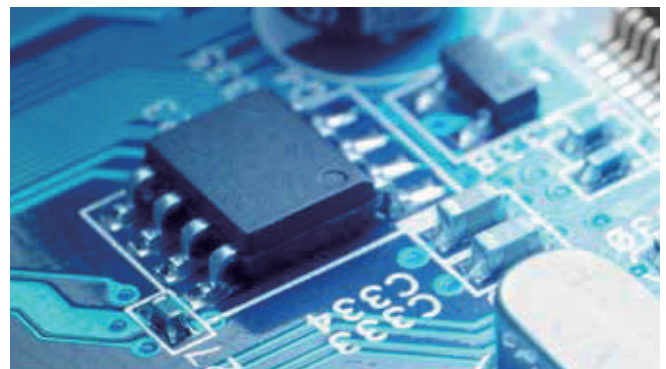
FREQUENCY CONTROL	API Technologies	Kyocera	Murata	Panasonic	TDK	Vishay - Dale
	Crystals	●	●	●	●	●
Oscillators	●	●	●	●	●	●
Piezo Sound Devices		●	●	●	●	
Resonators		●	●	●	●	
Tuning Forks		●				●

Discretes

POWER SEMICONDUCTORS	AVX	Bourns	Littelfuse - Teccor	Panasonic	ROHM Semiconductor	Semelab (TT Electronics)	Vishay
DIODES							
Arrays		◆	◆	◆	◆	◆	◆
Schottky	◆						
Small Signal		◆					
TVS	◆	◆	◆	◆	◆	◆	◆
Zener		◆	◆	◆	◆	◆	◆
RECTIFIERS							
Bridge			◆		◆		◆
Rectifiers		◆	◆		◆	◆	◆
Schottky			◆		◆	◆	◆
SCRs		◆					◆
THYRISTORS							
Protection			◆				
Switching (SCRs, Triacs)			◆				◆
TRANSISTORS							
Bipolar		◆	◆		◆	◆	
Small Signal		◆	◆	◆	◆	◆	
IGBTs							
Discrete					◆		◆
Modules			◆		◆	◆	◆
MOSFETS							
High-voltage					◆	◆	◆
Low-voltage			◆		◆	◆	◆
Modules					◆	◆	◆



OPTOELECTRONICS	Littelfuse	Murata (MPS)	OPTTEK (TT Electronics)	Panasonic	ROHM Semiconductor	Vishay
Digital Panel Meters		◆				
High Voltage Isolators			◆		◆	
Infrared Components			◆		◆	◆
LEDs - Indication				◆	◆	◆
LEDs Illumination <1W			◆	◆	◆	◆
LEDs - Illumination >1W			◆	◆	◆	◆
LED Displays					◆	◆
LED Drivers				◆	◆	◆
LED Modules				◆	◆	
Optical Sensing	◆		◆			◆
Opto Solutions			◆			
Optocouplers						◆
Solid State Relays				◆		



ADDITIONAL DISCRETE COMPONENTS	ROHM Semiconductor	Semelab (TT Electronics)	Vishay
Analog	◆	◆	◆
LED Drivers	◆		◆
Motor Control Drivers	◆		◆
RF Diodes	◆	◆	◆
RF Transistors	◆	◆	
Voltage Regulators	◆	▲	◆

▲ MIL Spec Discretes (DSCC)

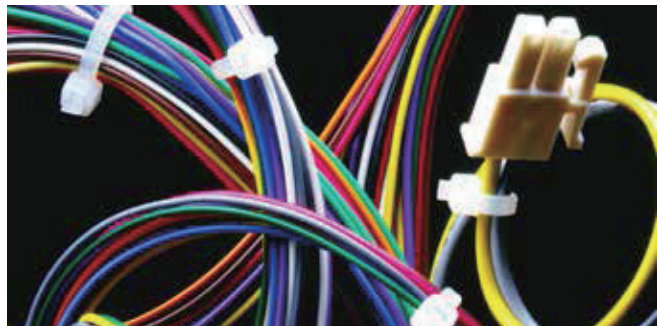
◆ Lead-free only parts available ▲ Lead-only compliant parts available

Interconnect

BACKPLANE, BOARD-TO-BOARD & DEVICE-TO-BOARD															
	3M	AirBorn	Amphenol	Amphenol Commercial	Amphenol PCD	Amphenol TCS	AVX - Elco	Bourns	FCI	Harwin	Molex	Omron	Panasonic	Smiths Interconnect	TE Connectivity
BACKPLANE															
10 Gb/s+ Solutions	◆	◆	◆					◆	◆	◆					◆
2.00 mm (.079 inch)	◆						◆			◆					◆
AOC Assemblies	◆		◆							◆					◆
Assemblies (Backplane)	◆									◆					◆
ATCA/MicroTCA	◆					◆				◆					◆
Cable Assemblies	◆	◆				◆				◆					◆
Card Edge	◆	◆	◆							◆					◆
Compact PCI	◆		◆			◆				◆				◆	
DIN 41612 (Eurocard)	◆					◆				◆					◆
Fiber Optic	◆			◆						◆					◆
Future Bus	◆									◆					◆
Hard Metric	◆					◆				◆					◆
High Speed Cable Assemblies	◆	◆		◆						◆					◆
PCI Express	◆		◆							◆					◆
Power	◆	◆	◆	◆		◆				◆					◆
RF / Ganged RF			◆							◆					◆
SCA-2			◆							◆					◆
BOARD TO BOARD															
Ball Grid Array (BGA)	◆				●			◆	◆	◆					◆
Battery Connectors							◆	◆	◆	◆					◆
Board Stacking	◆	●			●	◆				◆					◆
Breakaway Headers	◆		◆							◆					◆
Compression	◆	◆				◆				◆					◆
Headers & Receptacles	◆	◆		◆						◆					◆
Mezzanine/FPC	◆				●	◆				◆		◆			◆
Power	◆	◆	◆	◆		●	◆			◆					◆
Rotary Backlock												◆			
SCSI	◆	◆								◆					◆
Shunts	◆	◆				◆				◆					◆
Stacking	◆	◆	◆		●	◆				◆					◆
DEVICE TO BOARD															
AOC Assemblies	◆		◆							◆					◆
DIMM						◆				◆					◆
DIP	◆									◆					◆
High Speed Cable Assemblies	◆	◆		◆						◆					◆
PCMCIA	◆									◆					◆
PGA	◆									◆					◆
PLCC	◆									◆					◆
Rambus										◆					◆
RIMM / DIMM / SIMM										◆					◆
Rotary Backlock												◆			
SIP	◆									◆					◆
Slot 1 & 2										◆					◆
SO DIMM & RIMM						◆				◆					◆
Test / Burn-In Sockets	◆														◆
Transistor															◆



WIRE-TO-BOARD WIRE-TO-WIRE											
	3M	AirBorn	Amphenol	AVX - Elco	FCI	Harwin	Molex	Phoenix Contact	Smiths Interconnect	Souriau (Sterilene Connection Tech)	TE Connectivity
1.00 mm (.039 inch)	◆			◆		◆	◆				◆
1.25 mm (.049 inch)				◆		◆	◆				◆
1.27 mm (.050 inch)	◆					◆	◆				◆
2.00 mm (.079 inch)	◆			◆		◆	◆	◆	◆		◆
2.50 mm (.098 inch)				◆							◆
2.54 mm (.100 inch)	◆	●		◆		◆	◆	◆	◆		◆
3.00 mm (.118 inch)	◆			◆			◆				◆
3.68 mm (.145 inch)											◆
3.96 mm (.156 inch)								◆			◆
4.00 mm (.157 inch)				◆							◆
4.20 mm (.165 inch)								◆			◆
5.00 mm (.197 inch)								◆	◆		◆
5.03 mm (.198 inch)								◆			◆
5.08 mm (.200 inch)								◆	◆		◆
6.35 mm (.250 inch)								◆	◆		◆
7.50 mm (.295 inch)								◆	◆		◆
9.00 mm (.354 inch)				◆							◆
10.00 mm (.393 inch)									◆		◆
Bus Bar							◆	◆			◆
Cable Assemblies	◆	◆	◆	◆	◆	◆	◆	◆	◆	◆	◆
Discrete Wire	◆			◆	◆	◆	◆	◆	◆		◆
FFC / FPC				◆	◆	◆	◆	◆			◆
IDC Discrete Wire	◆			◆	◆	◆	◆	◆			◆
IDC / Mass Termination	◆		◆	◆	◆	◆	◆	◆			◆
Mini D Ribbon / Champ	◆		◆								◆
Power	◆	◆	◆	◆	◆	◆	◆	◆			◆
SATA / SAS / Mini SATA	◆	◆	◆	◆	◆	◆	◆	◆			◆
SCSI I, II, III	◆	◆					◆				◆



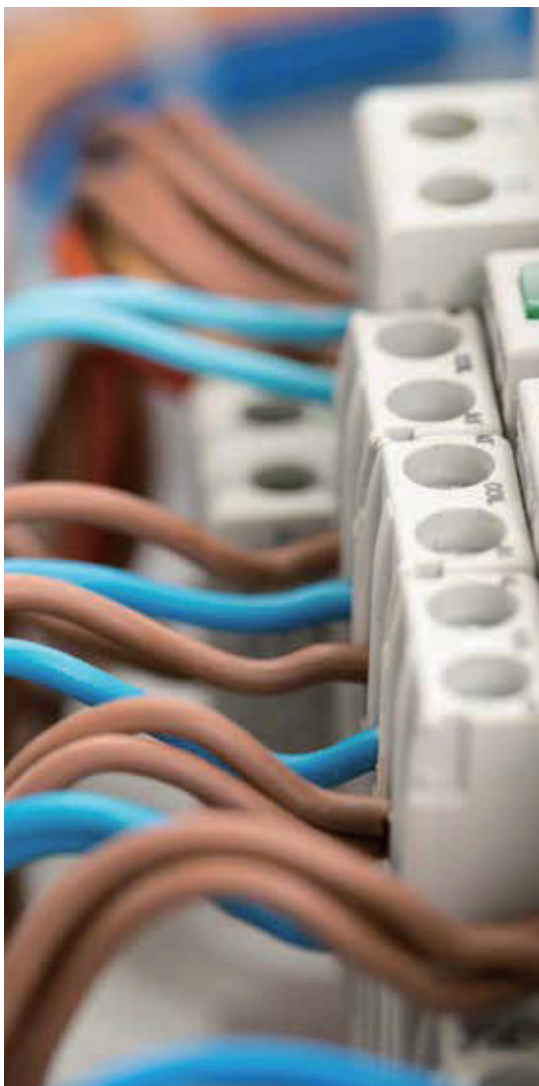
MEMORY CARD CONNECTORS							
	3M	Amphenol	AVX - Elco	C&K	FCI	Molex	TE Connectivity
CompactFlash™	◆	◆	◆		◆	◆	◆
DDR/DDR2/Mini DDR2			◆				◆
Express Card							◆
Full Size Card					◆		◆
Memory Stick / Duo							◆
Micro SD			◆				◆
Mini SD			◆				◆
MMC		◆	◆				◆
PC Card / CardBus	◆	◆					◆
PCMCIA	◆						◆
SD (Secure Digital)	◆		◆				◆
Smart Card (SAM)					◆		◆
Smart Card (SIM)		◆	◆				◆
TransF		◆					◆
xD		◆					◆

CompactFlash™ is a trademark of the Compact Flash Association

● Lead & Lead-free compliant parts available ◆ Lead-free only parts available

Interconnect

AUDIO	Amphenol Audio	Amphenol Nexus	Amphenol Tuchel	Smiths Interconnect	Spectrum Control (API Technologies)	TE Connectivity
1/4" Phone (T Series, M Series and Jacks)	◆					
1/4" Phone SwitchPlug	◆					
3.5mm PCB	◆					
AC PDN	◆					
AC Series XLR Cable	◆					
AC Series XLR Metal "Z" Chassis Mount	◆					
AC Series XLR PBC Chassis Mount	◆					
AC Series Dual 1/4" XLR	◆					
AC Series XLR Thermoplastic Chassis Mount	◆					
Accessories	◆	◆				
AX Series XLR Cable	◆					
BNC 75ohm Connectors	◆				◆	
C Type Combo 1/4" - XLR PCB	◆					
EP/AP Series High Power	◆					
Multipin Series	◆	◆	◆	◆	◆	
RCA Series	◆	◆				
SP High Current Loudspeaker	◆					
XLRnet Series Cable	◆					
XLRnet Series PCB / Chassis Mount	◆					



◆ Lead-free only parts available

TERMINAL BLOCKS	Amphenol PCD	FCI	Molex - Beau	Phoenix Contact	Smiths Interconnect	Souriau	Spectrum Control (API Technologies)	TE Connectivity
Barrier Strips			◆				◆	◆
Europa								◆
Eurostyle – Fixed / Pluggable	◆	◆	◆	◆				◆
2.54/3.50/3.81/5.0/5.08 mm	◆	◆	◆	◆				◆
Filtered					◆		◆	
Interface Modules	◆			◆				
NEMA								◆
Phenolic			◆					◆
Push Button			◆					
Rail Mounted	◆	◆	◆	◆		◆	◆	◆
Screw Terminal	◆	◆	◆	◆		◆	◆	◆
Spring Clamp	◆	◆	◆	◆				◆

TRANSPORTATION	3M	Amphenol	Apitiv	AVX - Elco	Fargo	FCI	Harwin	KOSTAL	Molex	PKC Group	Phoenix Contact	Preci-Dip	Smiths Interconnect	Souriau	Spectrum Control (API Technologies)	TE Connectivity
Agricultural		◆	◆	◆	◆	◆	◆	◆	◆	◆	◆			◆		◆
Automotive		◆	◆	◆	◆	◆	◆	◆	◆	◆	◆					◆
Commercial Vehicles		◆	◆	◆	◆	◆	◆	◆	◆	◆	◆			◆		◆
Construction		◆	◆	◆	◆	◆	◆	◆	◆	◆	◆				◆	◆
Marine		◆	◆	◆	◆	◆	◆	◆	◆	◆	◆			◆		◆
Mass Transit		◆		◆	◆	◆	◆	◆	◆				◆	◆		◆
Recreational Vehicles		◆	◆	◆	◆	◆	◆	◆	◆	◆	◆			◆		◆
INTERCONNECTS																
Backplane		◆	◆	◆	◆	◆	◆	◆	◆	◆	◆					◆
Backshells		◆	◆	◆	◆	◆	◆	◆	◆	◆	◆			◆		◆
Board-to-Board		◆	◆	◆	◆	◆	◆	◆	◆	◆	◆			◆		◆
Circular		◆	◆		◆	◆	◆	◆	◆	◆	◆			◆		◆
Contacts		◆	◆	◆	◆	◆	◆	◆	◆	◆	◆			◆		◆
Device-to-Board		◆	◆	◆	◆	◆	◆	◆	◆	◆	◆					◆
Input / Output		◆	◆	◆	◆	◆	◆	◆	◆	◆	◆			◆	◆	◆
Memory Card		◆	◆	◆	◆	◆	◆	◆	◆	◆	◆					◆
RF / Coax / Microwave		◆							◆					◆		◆
Solderless Terminals		◆	◆		◆	◆	◆	◆	◆	◆	◆					◆
Speciality		◆	◆	◆	◆	◆	◆	◆	◆	◆	◆			◆	◆	◆
Terminal Blocks		◆			◆	◆	◆	◆	◆	◆	◆					◆
Tooling		◆	◆	◆	◆	◆	◆	◆	◆	◆	◆			◆	◆	◆
USB		◆	◆	◆						◆						◆
Wire & Cable		◆	◆						◆							◆
Wire Management		◆	◆		◆	◆	◆	◆	◆	◆	◆					◆
Wire-to-Board		◆	◆	◆	◆	◆	◆	◆	◆	◆	◆			◆	◆	◆
Wire-to-Wire		◆	◆	◆	◆	◆	◆	◆	◆	◆	◆			◆	◆	◆

Interconnect

WIRE & BOARD MANAGEMENT/ ACCESSORIES										
	3M	AirBorn	Amphenol	Amphenol PCD	AVX - Elco	FCI	Harwin	Molex	Phoenix Contact	Souriau
Backshells	◆	◆	◆	◆	◆	◆	◆	◆	◆	◆
Cable Clips	◆					◆				◆
Cable Management	◆			◆					◆	◆
Cable Marker Ties	◆								◆	◆
Cable Mounts	◆							◆		
Cable Spacers	◆						◆			
Cable Terminals	◆						◆	◆		◆
Cable Ties	◆							◆	◆	
Heat Shrink Products	◆							◆	◆	◆
Jumper Links					◆	◆	◆	◆		
Labeling Systems	◆				◆			◆		◆
Labels	◆							◆		◆
PCB Spacers	◆	◆				◆				
PCB Terminals		◆			◆	◆	◆	◆	◆	◆
Printers/Software and Ribbons	◆							◆		◆
RFI Clips & Fingers						◆				◆
Shorting Links						◆	◆			
Solderless Terminals	◆				◆		◆	◆		
Splices	◆		◆	◆			◆	◆	◆	◆
Stainless Steel Accessories	◆									◆
Test Points						◆				◆
Tooling	◆	◆	◆			◆	◆	◆	◆	◆
Wire & Cable	◆		◆		◆	◆	◆	◆		◆
Wire Ducting	◆							◆		

RF/COAXIAL/MICROWAVE										
	3M	AirBorn	Amphenol Aero	Amphenol Connex	Amphenol RF	Amphenol SV Microwave	Molex	Smiths Interconnect	Souriau	TE Connectivity
1.0 / 2.3										
1.6 / 5.6					◆	◆	◆	◆		◆
7 / 16					◆	◆	◆	◆		◆
BMA							◆	◆		◆
BNC (50/75 Ω)					◆	◆	◆	◆		◆
BNC (Miniature)					◆					◆
B to B Blindmate/Compression							◆	◆		◆
BSA					◆	◆	◆	◆		◆
Coax Terminations										◆
Coax Attenuators										◆
FAKRA					◆					◆
MCX / MMCX					◆	◆	◆	◆		◆
MHV / SHV					◆		◆	◆		◆
Microwave Cable Assemblies							◆	◆		◆
Precision ¹					◆					◆
QMA					◆		◆	◆		◆
Reverse Polarity ²					◆	◆	◆			◆
RF Cable Assemblies								◆		◆
Shielded Terminators					◆					◆
SMA					◆	◆	◆	◆		◆
SMB (50/75 Ω)					◆	◆	◆	◆		◆
SMB (Miniature)					◆	◆	◆	◆		◆
SMC					◆	◆	◆	◆		◆
SMP					◆	◆	◆	◆		◆
SMT					◆					◆
SSMA							◆			◆
TNC					◆	◆	◆	◆		◆
Triax					◆	◆	◆	◆		◆
Twinax		◆	◆	◆	◆	◆	◆	◆	◆	◆
Type F/G					◆	◆	◆	◆		◆
Type N					◆	◆	◆	◆		◆
UHF / MiniUHF					◆	◆	◆	◆		◆

◆ Lead-free only parts available

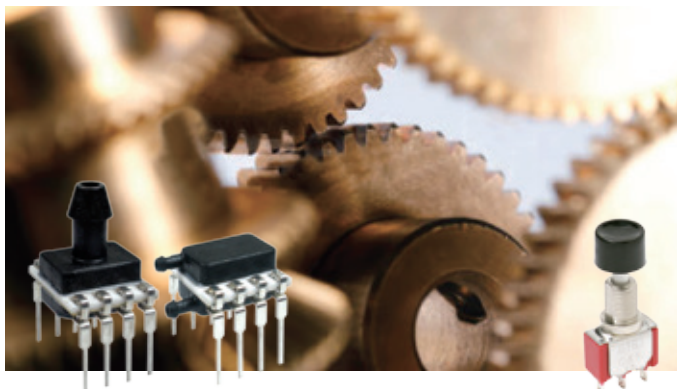
SPECIALTY																			
	3M	AirBorn	Amphenol	Amphenol Commercial	Amphenol PCD	Aptiv	AVX - Elco	Bourns	FCI	Harwin	Molex	Omron	Panasonic	Phoenix Contact	Smiths Interconnect	Souriau	Spectrum Control (API Technologies)	TE Connectivity	
Automotive				◆		◆	◆	◆	◆	◆	◆							◆	◆
Battery				◆				◆	◆	◆	◆						◆		◆
COTS			◆	◆			◆	◆	◆	◆	◆					◆	◆	◆	◆
EMI Shielded	◆	◆	◆		◆		◆	◆	◆	◆	◆						◆	◆	◆
Filtered			◆	◆													◆	◆	◆
Harsh Environment	◆	◆		◆			◆			◆	◆						◆	◆	◆
Hermetic		◆	◆														◆	◆	◆
High Voltage		◆	◆	◆							◆					◆	◆	◆	◆
Industrial	◆	◆		◆		◆					◆					◆	◆	◆	◆
LED Connector				◆									◆						◆
M8/M12												◆				◆			◆
Micro Miniature / Nano	◆	◆	◆	◆		◆		◆		◆	◆				◆	◆			◆

INPUT/OUTPUT																		
	3M	AirBorn	Amphenol	Amphenol Commercial	Amphenol PCD	AVX - Elco	FCI	Harwin	Molex	Omron	Panasonic	Phoenix Contact	Smiths Interconnect	Souriau	Spectrum Control (API Technologies)	TE Connectivity		
1394 & 1394b		◆	◆	◆					◆					◆		◆		
Audio			◆	◆	◆											◆	◆	
Camera Link / Mini Camera Link		◆															◆	◆
Circular		◆	◆	◆				◆	◆				◆	◆	◆	◆	◆	◆
Combo I/O		◆		◆			◆	◆	◆							◆		◆
Display Port				◆			◆	◆	◆									◆
D-Subminiature		◆	◆	◆									◆	◆	◆	◆	◆	◆
DVI			◆				◆	◆	◆	◆								◆
Fiber Channel				◆			◆	◆	◆							◆		◆
Fiber Optic		◆	◆				◆	◆	◆				◆	◆	◆	◆		◆
Filtered I/O		◆		◆					◆							◆		◆
HDMI / Micro HDMI				◆			◆	◆	◆									◆
IPass				◆			◆	◆	◆									◆
InfiniBand®				◆	◆		◆	◆	◆									◆
M12 / M12D / M8										◆								◆
Micro D			◆	◆						◆						◆		◆
Mini DIN / Circular DIN				◆														◆
Mini D-Subminiature																	◆	
Mobile Systems									◆								◆	◆
Modular Plugs & Jacks		◆	◆	◆			◆	◆	◆							◆		◆
PCI Express				◆				◆	◆									◆
Power		◆	◆	◆		◆	◆	◆	◆				◆	◆	◆	◆	◆	◆
Push / Pull									◆				◆	◆	◆	◆		◆
Rectangular		◆	◆	◆	◆	◆	◆	◆	◆				◆	◆	◆	◆		◆
RF / Coax / Microwave		◆	◆							◆		◆	◆	◆	◆	◆		◆
RJ / Industrial Ethernet				◆	◆	◆		◆	◆	◆			◆	◆	◆	◆		◆
SATA / SAS / Mini SATA		◆	◆	◆	◆	◆	◆	◆	◆									◆
SCSI		◆	◆	◆			◆	◆	◆									◆
SFP / XFP				◆				◆	◆									◆
TDP									◆									◆
USB / Mini USB / USB OTG				◆	◆	◆	◆	◆	◆					◆	◆	◆	◆	◆

InfiniBand® is a trademark of the InfiniBand Trade Association

Electromechanical

SENSORS													
	AVX	Bourns	Honeywell	KOA	Littelfuse, Hamlin	Murata	Omron Automation & Safety	Omron Components	Panasonic	ROHM Semiconductor	TDK / EPCOS	TT Electronics	Vishay
● On-board													
○ Off-board													
◆ Both On and Off-board													
MOTION/POSITION/SPEED													
Accelerometer			○			●		●	●				
Encoder/Rotary		○	◆		○	●	◆	●			●		
Inclinometer/Tilt						◆		●					●
Inertial Measurement Unit			○			●							
Liquid Level			○		○			○			●		
Motion (Human Presense)						●		●	◆	◆			
Position, Displacement		○	○					●				○	
Proximity		○	○		○	●	○		◆		○	○	
Shock & Vibration			○			●		◆	◆				
Speed (Hall-Effect)		◆	◆		○	●		◆	◆	○	◆		
Ultrasonic			○			◆	○						
OPTICAL													
Ambient Light						●		●	●				●
Fiber Optic			○				○						
Infrared			◆			●		●			●	●	
Photodiodes			◆			●					●	●	
Photoelectric			◆								◆	◆	
PRESSURE/FORCE/FLOW													
Barometer						●							
Flow			◆				◆	◆				○	
Force			●										
Load Cell/Load Pin			○										
Pressure			◆		◆	●		●	◆	●	◆	◆	
THERMAL/HUMIDITY													
Air/Gas/Fluid Property			◆							●			
Combination MEMS/SMD			●					●					
Heaters			◆										
Humidity			◆								●		
NTC Thermistor	●		◆	●	●	●		●	◆	◆	◆	◆	
Probes & Assemblies			○								○	○	○
PTC Thermistor			●		●	●		◆		●	◆	◆	
RTD			◆				◆					●	
Thermocouplers							○				○		
Thermophile								●					
OTHER													
Auto/Vehicle		●	◆			●				●	●		
Capacitive Touch						●							
Current			◆			●					○		



POWER SUPPLIES					
	Murata Power Solutions	Omron Industrial	Panasonic	Phoenix Contact	TDK
AC/DC Power Supplies	◆	◆		◆	
DC/DC Power Converters	◆	◆	◆		
DC/AC Power Inverters		◆			◆

◆ Lead-free only parts available

RELAYS, CIRCUIT BREAKERS & SWITCHES											
	Bourns	C&K Components	Hamlin (Littelfuse)	Honeywell	KEMET / NEC TOKIN	Littelfuse - Teccor	Omron	Panasonic	Phoenix Contact	TE Connectivity	
RELAYS											
Automotive					◆		◆	◆	◆		
Communication							◆	◆	◆		
Compressor										◆	
Contactors										◆	
Crystal Can										◆	
Definite Purpose Contactors										◆	
DIN Rail Mounted							◆	◆	◆		
Dry Reed										◆	
Forcibly-Guided Contact		◆						◆		◆	
General Purpose						◆	◆	◆	◆		
High Voltage Switching						◆	◆	◆	◆		
Industrial DC & AC							◆	◆	◆		
Input/Output Modules								◆	◆		
Low Signal PCB					◆			◆	◆		
Magnetic Latching								◆	◆	◆	
Military										◆	
Miniature PCB								◆	◆	◆	
MOSFET								◆	◆		
Panel/Plug-In								◆	◆	◆	
Phase Sequencing										◆	
Power								◆	◆	◆	
Power Controllers										◆	
Power Distribution Panels										◆	
Power PCB									◆	◆	
Programmable Time Delay									◆	◆	
Protective									◆	◆	
Reed			◆		◆				◆	◆	
Reverse Power										◆	
RF										◆	
Rotary										◆	
Safety									◆	◆	
Signal									◆	◆	
Sockets									◆	◆	
Solid State									◆	◆	
Time Delay									◆	◆	
Timers									◆	◆	
TO-5										◆	
Traffic Control										◆	
CIRCUIT BREAKERS											
Electronic Circuit Breaker										◆	
Hydraulic / Magnetic Circuit Breakers										◆	
Thermal Circuit Breakers										◆	
SWITCHES											
Contact Block										◆	◆
Detector		◆							◆	◆	◆
DIP		◆	◆							◆	◆
Encoder				◆						◆	
Fader										◆	
Hour Meter					◆						
Industrial		◆	◆						◆	◆	◆
Keylock		◆	◆							◆	◆
Keypad		◆	◆							◆	◆
Knobs										◆	◆
Limit		◆	◆								
Membrane										◆	
Navigation		◆				◆					
Optical			◆						◆	◆	
Paddle		◆	◆			◆				◆	◆
Panel Mount		◆	◆						◆	◆	◆
Power Rocker		◆								◆	◆
Pressure Switch					◆						
Pushbutton		◆	◆			◆			◆	◆	◆
Pushwheel		◆	◆			◆					◆
Reed			◆								
Rocker		◆	◆						◆	◆	◆
Rotary	◆	◆	◆						◆	◆	◆
Safety	◆	◆	◆						◆	◆	
Selector		◆	◆							◆	
Slide		◆	◆							◆	◆
Snap Action		◆	◆						◆	◆	◆
Special Purpose		◆	◆						◆	◆	◆
Switchlock		◆									
Surface Mount		◆								◆	◆
Tactile		◆	◆						◆	◆	◆
Thumbwheel		◆							◆	◆	
Toggle		◆	◆						◆	◆	◆
Vacuum									◆		



There's a TTI location near you.



The World's Leading Distributor
of Interconnect, Passive, Electromechanical
and Discrete Components



TTI ASIA Line Card

CHINA

Beijing

Phone +86 10 6566 4283
Fax +86 10 6566 4238

Chengdu

Phone +86 512 8885 9626
Fax +86 512 8885 9620

Dalian

Phone +86 10 6566 4283
Fax +86 10 6566 4238

Dongguan

Phone +86 769 8275 6645
Fax +86 769 8608 0078

Hangzhou

Phone +86 512 8885 9626
Fax +86 512 8885 9620

Liuzhou

Phone +86 769 8608 8612
Fax +86 769 8275 9342

Qingdao

Phone +86 10 6566 4238
Fax +86 10 6566 4283

Shanghai

Phone +86 21 5174 2088
Fax +86 21 5153 1383

Shenzhen

Phone +86 755 2269 1988
Fax +86 755 8386 5272

Suzhou

Phone +86 512 8885 9626
Fax +86 512 8885 9620

Wuhan

Phone +86 512 8885 9626
Fax +86 512 8885 9620

Xiamen

Phone +86 592 5751 803
Fax +86 592 5753 038

Hong Kong

Phone +852 3658 4700
Fax +852 2628 0966

Taichung, Taiwan

Phone +886 2 2796 8305
Fax +886 2 2796 8315

Taipei, Taiwan

Phone +886 2 2796 8305
Fax +886 2 2796 8315

SOUTH ASIA

Indonesia

Phone +65 6788 9200
Fax +65 6788 9300

Kuala Lumpur, Malaysia

Phone +60 4 659 2011
Fax +60 4 659 3011

Penang, Malaysia

Phone +60 4 659 2011
Fax +60 4 659 3011

Philippines

Phone +63 2654 5599
Fax +63 2234 2187

Singapore

Phone +65 6788 9200
Fax +65 6788 9300

Thailand

Phone +662 694 2277
Fax +662 694 2276

Hanoi, Vietnam

Phone +65 6788 9200
Fax +65 6788 9300

Ho Chi Minh, Vietnam

Phone +65 6788 9200
Fax +65 6788 9300

OTHER LOCATIONS

Bangalore, India

Phone +91 80 4147 7191
Fax +91 80 4147 7192

New Delhi, India

Phone +91 80 4147 7191
Fax +91 80 4147 7192

Pune, India

Phone +91 80 4530 1988
Fax +91 80 4147 7192

Seoul, South Korea

Phone +82 2 3156 8763
Fax +82 2 3156 8766

Gumi, South Korea

Phone +82 2 3156 8763
Fax +82 2 3156 8766

There's a TTI location near you.

Global Headquarter

www.ttiinc.com

TTI, Inc.
2441 Northeast Parkway
Fort Worth, Texas
76106-1816, USA
Phone +001 817 740 9000
Fax +001 817 740 9898

Asia Headquarter

www.ttiasia.com

TTI Electronics Asia Pte. Ltd
3 Changi North Street 2
Logistech Building #04-01
Singapore 498827
Phone +65 6788 9200
Fax +65 6788 9300

Europe Headquarter

www.ttieurope.com

TTI, Inc.
Ganghoferstr. 34
82216 Maisach-Gernlinden
Germany
Phone +49 8142 6680-0
Fax +49 8142 6680-490



Contact TTI: FeedbackTTIASia@ttiinc.com
China Toll Free Number: **400-844-4868**



Supplier Authorized
Distributor

LC EN 0118 ASIA

ISO 9001:2000
Registered